

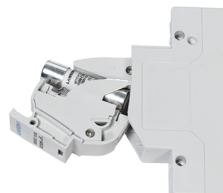


# LFPV-32

## Solar DC Fuse



PART OF



+44 (0) 1661 8644000



sales@lawsonfuses.com



www.lawson-fuses.com



lawson-fuses-limited

## SOLAR DC FUSE

## TYPE LFPV-32

### Type LFPV-32 Solar DC Fuse complying with IEC 60269-1 & IEC 60269-6

Rated voltages: DC 1000V, Rated current: 1-32A, Breaking Capacity: DC 20kA, Utilisation Category gPV for solar protection



Lawson Type LFPV-32 Solar DC Fuses are a range of 10 x 38 mm fuse-links specifically designed for protecting photovoltaic strings.

These fuse-links are capable of interrupting low overcurrents associated with faulted photovoltaic string arrays (reverse current, multi-array fault.)



### SPECIFICATIONS

Pole	1P
Rated Voltage (Vdc)	1000
Rated Current (A)	1,2,3,4,5,6,8,10,12,15,20,25,32
Maximum Block Capability (kA)	20
Maximum Power Dissipation (W)	3.5

### CONNECTIONS AND INSTALLATIONS

Connection (mm <sup>2</sup> )	2.5 to 10mm <sup>2</sup>
Working Temperature (°C)	~ -30 + 70
Altitude (m)	≤ 2000
Relative Humidity	≤ 95%
Protection class/degree	IP20
Installation Environment	No obvious shock and vibration
Installation class/type	Class III / DIN rail

### SIZE (mm)

(W x H x L)	W	18
	H	79
	L	62
Fuse Size		10 x 38
Fuse-Link Weight (kg)		0.011
Fuse holder weight (kg)		0.07

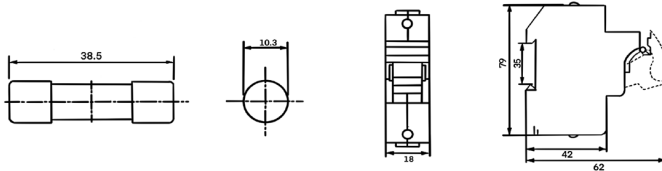
## SOLAR DC FUSE

TYPE LPFV-32

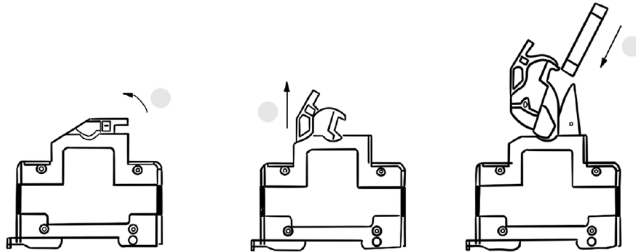
Type LPFV-32 Solar DC Fuse complying with IEC 60269-1 & IEC 60269-6

Rated voltages: DC 1000V, Rated current: 1-32A, Breaking Capacity: DC 20kA, Utilisation Category gPV for solar protection

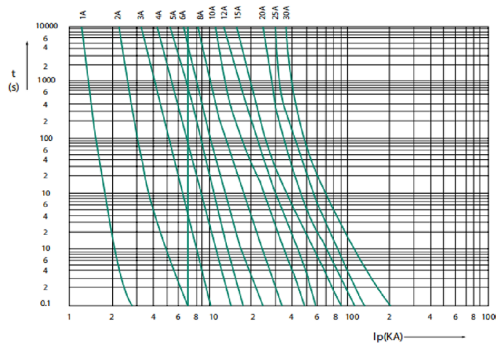
## DIMENSIONS



## INSTALLATIONS



## CHARACTERISTIC CURVE





PART OF



**Product Design | Application Support | Highest Quality**

**Customer Service Team UK:**  
Telephone: +44 (0) 1661 864400

**Customer Service Team India:**  
Telephone: +91 2676 614719

**Lawson Fuses UK:**

Meadowfield,  
Ponteland,  
Newcastle Upon Tyne  
NE20 9SW  
United Kingdom

**Lawson Lucy India  
Private Limited:**

Nexus Industrial Park  
Phase-1,  
Vadodara Halol Road,  
Taluka Waghodia  
Vadodara, Gujarat  
391510  
India

Email: [sales@lawsonfuses.com](mailto:sales@lawsonfuses.com)  
Visit Our Website: [www.lawson-fuses.com](http://www.lawson-fuses.com)