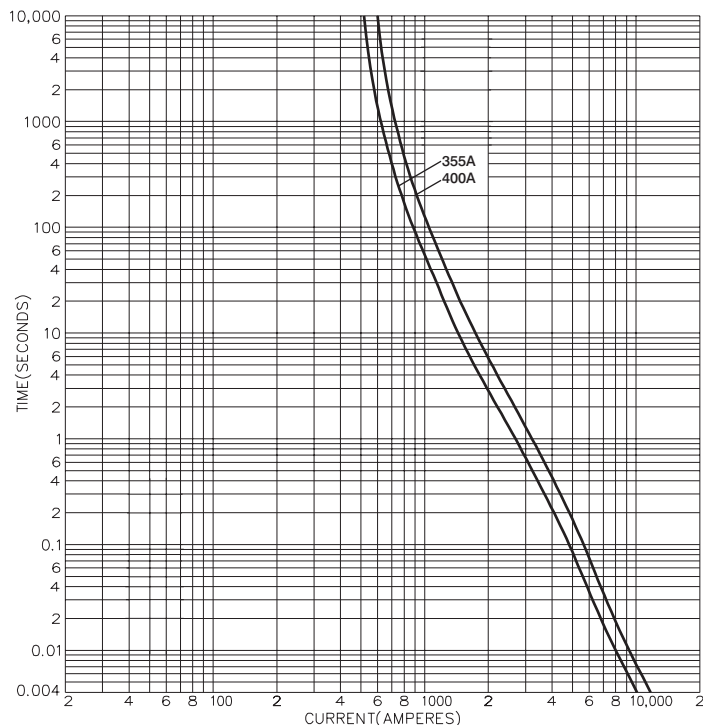


BS88:5 'J'- Type Feeder Pillar Fuse Link
415 Volts 355A and 400A ac

PJ31-7

Time-Current Characteristic Curves



Description.

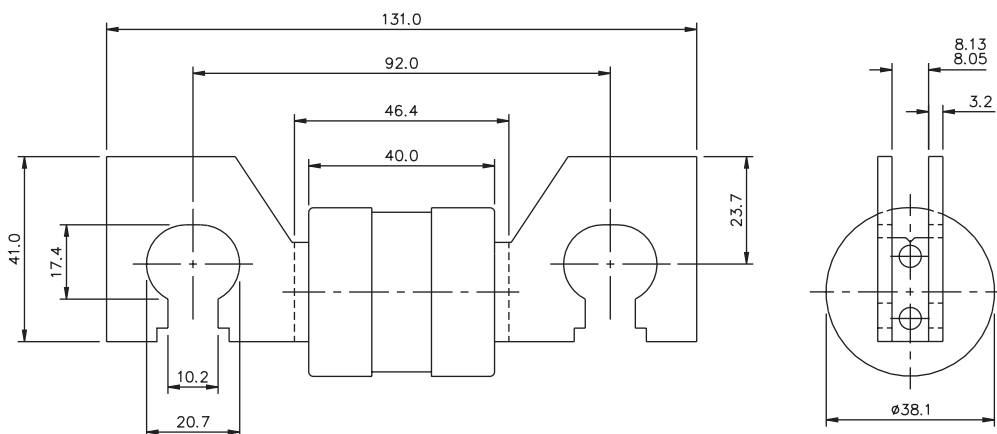
Feeder Pillar fuse Links are designed to meet the exacting requirements of the Electricity Supply Industry and are ASTA Certified to BS88:5

The ordering codes are given in the table below.

Catalog Number	I ² t (Amp ² Seconds)				Nom. Watts Loss	Rated Voltage ac
	Amp Ratings	Pre-Arcing	Total at 240V	Total at 415V		
355PJ31	355	360,000	610,000	865,000	26	415V
400PJ31	400	475,000	810,000	1,150,000	31	

Packaging - 10 per carton

Dimensional Data



This bulletin is intended to clearly present comprehensive product data and provide technical information that will help the end user with design applications. Bussmann reserves the right, without notice, to change design or construction of any products and to discontinue or limit distribution of any products. Bussmann also reserves the right to change or update, without notice, any technical information contained in this bulletin. Once a product has been selected, it should be tested by the user in all possible applications.



Bussmann Division
Cooper (U.K.) Ltd
 Burton-on-the-Wolds
 Leicestershire, LE12 5TH
 United Kingdom
 Tel: (44) (0)1509 88 27 37
 Fax: (44) (0)1509 88 27 86

Head Office
 St. Louis, MO, U.S.A. Tel: (314) 527-3877 Fax: (800) 544-2570 International Fax: (314) 527-1445



Bussmann Information Fax (00 1) 314 527 1450