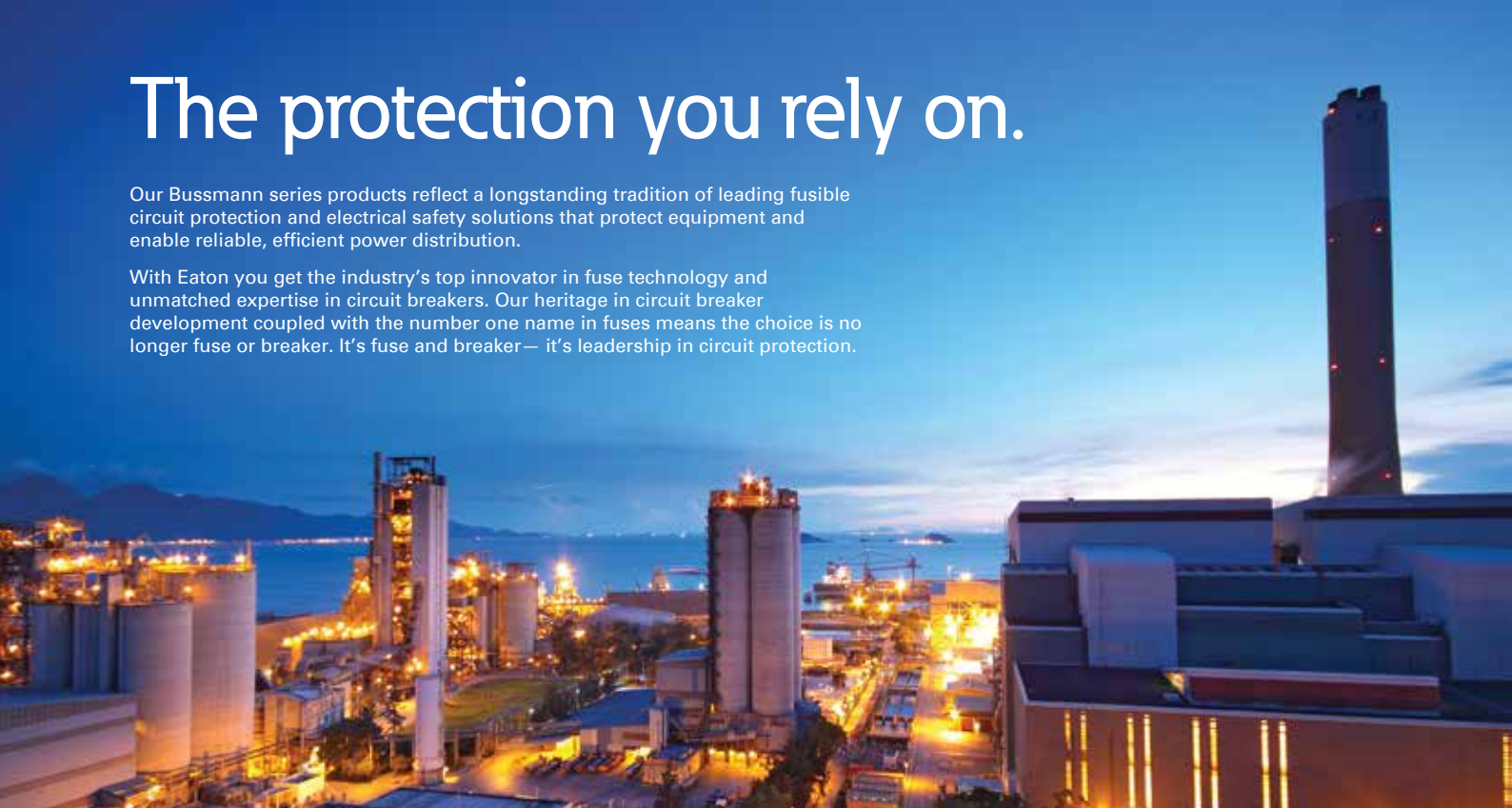


# The protection you rely on.

Our Bussmann series products reflect a longstanding tradition of leading fusible circuit protection and electrical safety solutions that protect equipment and enable reliable, efficient power distribution.

With Eaton you get the industry's top innovator in fuse technology and unmatched expertise in circuit breakers. Our heritage in circuit breaker development coupled with the number one name in fuses means the choice is no longer fuse or breaker. It's fuse and breaker— it's leadership in circuit protection.



## BUSSMANN SERIES

### British Standard (BS) Fuse Links and Fuse Holders

Fuse links for general industrial applications with Q1 fusing factor, general purpose (gG) and motor protection (gM) characteristics for general industrial and motor applications.

Standard: BS88 part 1 to 6, IEC 60269 part 1 and 2

Rated voltage: 415, 550 and 690Vac

Rated current: 2 to 1250A

Breaking capacity: 80kA

Operating class: gG and gM

Sizes: A1 to A4, B1 to B4, C1 to C3, D2, E1, F1 and F2 and non standard sizes

Fuse holders: Full range of fuse holders available (Red Spot, Camaster and Safeloc)

Applications: Residential, commercial and industrial



### Bussmann series BS88 industrial fuse links

Item no.	Bussmann/GE Item no.	Amps	Fuse holder	Volts	Dim	Box qty
<b>Clip in type.</b>						
NSD2	NS2	2				
NSD4	NS4	4				
NSD6	NS6	6				
NSD10	NS10	10	32NNS*	550	58.5mm	20
NSD16	NS16	16	SC32*			
NSD20	NS20	20				
NSD25	NS25	25				
NSD32	NS32	32				
NSD20M25	NS20M25	20M25				
NSD20M32	NS20M32	20M32				
NSD32M36	NS32M36	32M36	32NNS*	415	58.5mm	20
NSD32M40	NS32M40	32M40	SC32*			
NSD32M50	NS32M50	32M50				
NSD32M63	NS32M63	32M63				



NSD32

LV Fuse gear

Bussmann series BS88 industrial fuse links

Item no.	Bussmann/GE Item no.	Amps	Fuse holder	Volts	Dim	Box qty
SSD2	SS2	2				
SSD4	SS4	4				
SSD6	SS6	6				
SSD10	SS10	10		240	47.0mm	20
SSD16	SS16	16				
SSD20	SS20	20				
SSD25	SS25	25				
SSD32	SS32	32				
<hr/>						
ESD2		2				
ESD4		4				
ESD6		6				
ESD10		10				
ESD16		16				
ESD20		20	63ENS* SC63*	550	68.0mm	20
ESD25		25				
ESD32		32				
ESD40	ES40	40				
ESD50	ES50	50				
ESD63	ES63	63				
ESD63M80	ES63M80	63M80	63ENS* SC63*	415	68.0mm	20
ESD63M100		63M100				
<hr/>						
<b>Offset bolted tags</b>						
STD2	LST2	2				
STD4	LST4	4				
STD6	LST6	6				
STD10	LST10	10		240	35.0mm	20
STD16	LST16	16				
STD20	LST20	20				
STD25	LST25	25				
STD32	LST32	32				
<hr/>						
NITD2	NIT2L	2				
NITD4	NIT4L	4				
NITD6	NIT6L	6				
NITD10	NIT10L	10	CM32FC RS20*	550	44.5mm	20
NITD16	NIT16L	16				
NITD20	NIT20L	20				
NITD25	NIT25L	25				
NITD32	NIT32L	32				
NITD20M25	NIT20M25L	20M25				
NITD20M32	NIT20M32L	25M32				
NITD32M40	NIT32M40L	32M40	CM32FC RS32*	415	44.5mm	20
NITD32M50	NIT32M50L	32M50				
NITD32M63	NIT32M63L	32M63				



SSD32



ESD63



STD10



NITD6

## LV Fuse gear

### Bussmann series BS88 industrial fuse links

Item no.	Bussmann/GE Item no.	Amps	Fuse holder	Volts	Dim	Box qty
<b>Offset bolted tags</b>						
AAO2	TIA2L	2	CM32F RS32 RS63	550	73.5mm	20
AAO4	TIA4L	4				
AAO6	TIA6L	6				
AAO10	TIA10L	10				
AAO16	TIA16L	16				
AAO20	TIA20L	20				
AAO25	TIA25L	25				
AAO32	TIA32L	32				
AAO32M40	TIA32M40L	32M40				
AAO32M50	TIA32M50L	32M50				
AAO32M63	TIA32M63L	32M63				
BAO35	TIS35L	35	CM63F RS63	550	73.5mm	20
BAO40	TIS40L	40				
BAO50	TIS50L	50				
BAO63	TIS63L	63				
BAO63M80	TIS63M80L	63M80				
BAO63M100	TIS63M100L	63M100				
OSD80	OS80	80	CM100F	415	73.0mm	20
OSD100	OS100	100				
OSD100M125	OS100M125	100M125				
OSD100M160		100M160				
CEO32		32	RS100*	550	94.0mm	10
CEO40		40				
CEO50		50				
CEO63		63				
CEO80	TCP80L	80				
CEO100	TCP100L	100	RS100*	415	94.0mm	10
CEO100M125	TCP100M125L	100M125				
CEO100M160	TCP100M160L	100M160				
CEO100M200	TCP100M200L	100M200				
DEO125	TFP125L	125		415	94.0mm	5
DEO160	TFP160L	160				
DEO200	TFP200L	200				
DEO200M250	TFP200M250L	200M250				
DEO200M315	TFP200M315L	200M315				
<b>Centre bolted tags - 2 hole fixing.</b>						
AC2		2		550	97.5mm	20
AC4		4				
AC6		6				
AC10		10				
AC16		16				
AC20		20				
AC25		25				
AC32		32				
BC40		40				
BC50		50				
BC63		63				
BC63M80		63M80				
BC63M100		63M100				



AAO32



BAO63



OSD100



DEO200



AC32

**LV Fuse gear**

Bussmann series BS88 industrial fuse links

Item no.	Bussmann/GE Item no.	Amps	Fuse holder	Volts	Dim	Box qty
<b>Centre bolted tags - 2 hole fixing.</b>						
AD2		2				
AD4		4				
AD6		6				
AD10		10				
AD16		16				
AD20		20	RS200*	550	111.5mm	20
AD25		25				
AD32		32				
BD40		40				
BD50		50				
BD63		63				
CD80	TC80L	80	RS200*	550	111.0mm	10
CD100	TC100L	100				
CD100M125		100M125				
CD100M160		100M160	RS200*	415	111.0mm	10
CD100M200		100M200				
DD125	TF125L	125				
DD160	TF160L	160				
DD200	TF200L	200	RS200*	415	111.0mm	5
DD200M250	TF200M250L	200M250				
DD200M315	TF200M315L	200M315				
ED250	TKF250L	250				
ED315	TKF315L	315				
ED355	TMF355L	355		415	111mm	1
ED400	TMF400L	400				
ED315M400	TKF315M400L	315M400				
ED400M500		400M500		550	111mm	1
EFS125		125				
EFS160		160				
EFS200		200	RS400*	415	133mm	1
EFS250	TKM250L	250				
<b>Centre bolted tags - 4 hole fixing.</b>						
EFS315	TKM315L	315		415	133/ 184mm	1
EF355	TM355L	355		415	133/ 184mm	1
EF400	TM400L	400				
EF400M500		400M500		550		
FF450	TTM450L	450				
FF500	TTM500L	500		550	133/ 184mm	1
FF560	TTM560L	560				
FF630	TTM630L	630				
FG450		450				
FG500		500		550	133/ 184mm	1
FG560		560				
FG630		630				



AD32



DD200



ED315



EFS315



FF630

## LV Fuse gear

### Bussmann series BS88 industrial fuse links



GG710

Item no.	Bussmann/GE Item no.	Amps	Fuse holder	Volts	Dim	Box qty	
<b>Centre bolted tags - 4 hole fixing.</b>							
GF710	TLM710L	710		550	133/ 184mm	1	
GF800	TLM800L	800					
GG710		710		550	167/ 231mm	1	
GG800		800					
GG1000		1000					
GG1250		1250					
GH710		710		550	149mm	1	
GH800		800					
GH1000		1000					
GH1250		1250					
<b>Special tag arrangements - 660Vac / 400Vdc.</b>							
125N20		125		660	92.5mm	1	
160N20		160					
200N20		200					
250N20		250					
315N20		315					
355P20		355					
400P20		400					
450R20		450					
500R20		500					
560R20		560					
630R20		630					
710S20		710					
800S20		800		550	92.5mm	1	
<b>Offset bolted tags</b>							
	NIT2	2		CM32FC RS20*	550	44.5mm	20
	NIT4	4					
	NIT6	6					
	NIT10	10					
	NIT16	16					
	NIT20	20					
	NET25	25		CM32FC RS32*	440	44.5mm	20
	NET32	32					
	NIT20M25	20M25		CM32FC RS32*	415	44.5mm	20
	NIT20M32	25M32					
	NIT32M40	32M40					
	NIT32M50	32M50					
	NIT32M63	32M63					
<b>Offset bolted tags - 660V.</b>							
	2H07-660	TIA2	2	CM63F RS63*	660	73.5mm	20
	4H07-660	TIA4	4				
	6H07-660	TIA6	6				
	10H07-660	TIA10	10				
	16H07-660	TIA16	16				
	20H07-660	TIA20	20				
	25H07-660	TIA25	25				
	32H07-660	TIA32	32				
		TIA32M35	32M35				
		TIA32M40	32M40				
		TIA32M50	32M50				
		TIA32M63	32M63				



200N20



NITD6



H07-660

**LV Fuse gear**

Bussmann series BS88 industrial fuse links

Item no.	Bussmann/GE Item no.	Amps	Fuse holder	Volts	Dim	Box qty			
<b>Offset bolted tags - 660V.</b>									
	TIS35	35							
40K07-660	TIS40	40							
50K07-660	TIS50	50	CM63F RS63*	660	73.5mm	20			
63K07-660	TIS63	63							
	TIS63M80	63M80							
	TIS63M100	63M100							
80L14-660	TCP80	80							
100L14-660	TCP100	100							
	TCP100M125	100M125	RS100*	660	94mm	20			
	TCP100M160	100M160							
	TCP100M200	100M200							
125M14-660	TFP125	125							
160M14-660	TFP160	160		550	94mm	10			
200M14-660	TFP200	200							
<b>Centre bolted tags - 660V.</b>									
2K08-660	TB2	2							
4K08-660	TB4	4							
6K08-660	TB6	6							
10K08-660	TB10	10							
16K08-660	TB16	16							
20K08-660	TB20	20		660	97.5mm	1			
25K08-660	TB25	25							
32K08-660	TB32	32							
40K08-660	TB40	40							
50K08-660	TB50	50							
63K08-660	TB63	63							
2K09-660	TBC2	2							
4K09-660	TBC4	4							
6K09-660	TBC6	6							
10K09-660	TBC10	10							
16K09-660	TBC16	16							
20K09-660	TBC20	20	RS200*				660	111mm	1
25K09-660	TBC25	25							
32K09-660	TBC32	32							
40K09-660	TBC40	40							
50K09-660	TBC50	50							
63K09-660	TBC63	63							
	TBC63M100	63M100							
80L09-660	TC80	80							
100L09-660	TC100	100							
125M09-660	TF125	125							
160M09-660	TF160	160							
200M09-660	TF200	200		660	111mm	20			
	TF200M250	200M250							
	TF200M315	200M315							
250N09-660	TKF250	250							
315N09-660	TKF315	315		660	111mm	1			
	TKF315M355	315M355							



K07-660



L14-660



K08-660



L09-660



M09-660

## LV Fuse gear

### Bussmann series BS88 industrial fuse links and fuse holders

Item no.	Bussmann/GE Item no.	Amps	Fuse holder	Volts	Dim	Box qty
<b>Centre bolted tags - 660V.</b>						
355P09-660	TMF355	355		660	111mm	1
400P09-660	TMF400	400				
125N11-660		125		660	133mm	1
160N11-660		160				
200N11-660		200				
250N11-660	TKM250	250				
315N11-660	TKM315	315				
355P11-660	TM355	355		660	184 / 133mm	1
400P11-660	TM400	400				
450R11-660	TTM450	450		550	184 / 133mm	1
500R11-660	TTM500	500				
560R11-660	TTM560	560				
630R11-660	TTM630	630				
450R12-660	TT450	450				
500R12-660	TT500	500		550	231 / 167mm	1
560R12-660	TT560	560				
630R12-660	TT630	630				
	TLM670	670		660	184 / 133mm	1
	TLM710	710				
	TLM750	750				
	TLM800	800				
Item no.	Description	Amps	Fuse holder	Volts	Dim	Box qty
<b>SAFEloc fuse holders</b>						
32NNSF	Front wired		NS / NSD	32	690	10
32NNSR	Back wired					
32NNSBS	Back stud					
32NNSFBS	Front wired / back stud					
32NNSFWHITE	Front wired, white					
32NNSFBSWHITE	F. Wired / b. Stud, white					
32NNSBSWHITE	Back stud, white					
63ENSF	Front wired		ES / ESD	63	690	10
63ENSR	Back wired					
63ENSBS	Back stud					
63ENSFBS	Front wired / back stud					
63ENSFWHITE	Front wired, white					
63ENSFBSWHITE	Front wired / back stud, white					
63ENSBSWHITE	Back stud, white					
32NNL	Neutral link		32NNS*		690	10
63ENL	Neutral link		63ENS*			



SAFEloc

## LV Fuse gear

### Bussmann series BS88 industrial fuse links and fuse holders

Item no.	Description	Amps	Fuse holder	Volts	Dim	Box qty
<b>CAMaster fuse holders</b>						
CM32FC	Front wired		NITD	32	690	10
CM32F	Front wired		AAO	32		
CM63F	Front wired		BAO	63		
CM100F	Front wired		OSD	100		
CM32FCW	Front wired, white		NITD	32	690	10
CM32FW	Front wired, white		AAO	32		
CM63FW	Front wired, white		BAO	63		
CM100FW	Front wired, white		OSD	100		



CAMaster

Item no.	Description	Fuse holder to suit.	Volts	Box qty
<b>CAMaster accessories.</b>				
32CMLC	Bolted neutral link	CM32FC	690	10
32CML	Bolted neutral link	CM32F		1
63-100CML	Bolted neutral link	CM63F & CM100F		1
32BS	Back stud conversion kits	CM32FC & CM32F	690	10
63/100BS	Back stud conversion kits	CM63F & CM100F		5
32LSCC	Lockable safety carrier	CM32FC	690	3
32LSC	Lockable safety carrier	CM32F		3
63-100LSC	Lockable safety carrier	CM63F & CM100F		3



CAMaster accessories - Studs

Item no.	Description	Fuse	Amps	Volts	Box qty
<b>Safeclip fuse holders</b>					
SC20H	Front wired	NS / NSD	20	415	10
SC20P	Back stud				
SC20BH	Busbar connect / front connect				
SC20HWH	Front wired, white				
SC32H-D	Front wired	NS / NSD	32	415	10
SC32PH-D	Front wired / back stud				
SC32BH	Busbar connect / front connect				
SC32P	Back stud				
SC32H-DWH	Front wired, white				
SC32PWH	Back stud, white				
SC32PH-DWH	Front wired / back stud - white				
SC63H-D	Front wired	ES / ESD	63	415	10
SC63BH	Busbar connect / front connect				
SC63P	Back stud				
SC63H-DWH	Back stud, white				



Safeclip fuseholder - black



Safeclip fuseholder - white



## LV Fuse gear

### Bussmann series BS88 industrial fuse links and fuse holders



Red spot fuseholder - black



Red spot fuseholder - white

Item no.	Description	Fuse	Amps	Volts	Box qty
<b>Red spot fuse holders</b>					
RS20H	Front wired	NIT / NITD	20	690	10
RS20BW	Back wired				
RS20P-G	Back stud				
RS20PH-G	Front wired / back stud				
RS20H-WH	Front wired, white				
RS20PG-WH	Back stud, white				
RS32H	Front wired	TIA / AAO	32	690	10
RS32BW	Back wired				
RS32P	Back stud				
RS32PH	Front wired / back stud				
RS32HWH	Front wired, white				
RS32PWH	Back stud, white				
RS63H	Front wired	TIA / TIS AAO / BAO	63	690	5
RS63BW	Back wired				
RS63P	Back stud				
RS63PH	Front wired / back stud				
RS63HWH	Front wired, white				
RS63PWH	Back stud, white				
RS100H	Front wired	TCP / CEO	100	690	5
RS100BW	Back wired				
RS100P	Back stud				
RS100PH	Front wired / back stud				
RS100HWH	Front wired, white				
RS100PWH	Back stud, white				
RS200H	Front wired	TC / TF CD / DD	200	690	1
RS200P	Back stud				
RS200PH	Front wired / back stud				
RS200HWH	Front wired, white				
RS200PWH	Back stud, white				
RS400H	Front wired				
RS400P	Back stud				
RS400PH	Front wired / back stud				
<b>Redspot accessories.</b>					
RS20LOCK	Pad lockable inserts		20	690	3
RS32LOCK	Pad lockable inserts		32		
RS63LOCK	Pad lockable inserts		63		
RS100LOCK	Pad lockable inserts		100		
RS20RED	Red isolation carriers		20	690	5
RS32RED	Red isolation carriers		32		
RS63RED	Red isolation carriers		63		
RS100RED	Red isolation carriers		100		
P110151-10	RS20CLINK	Bolted Neutral Links	20	690	5
P110152-10	RS32CLINK		32		
P110153-10	RS63CLINK		63		
P110154-10	RS100CLINK		100		



RS63LOCK

## LV Fuse gear

### Type J Feeder Pillar Fuse Links

Cylindrical type fuse links designed to be used with wedge type fuse carriers on BS applications. These fuse links will be used by Electrical Authorities in distribution pillars, open type substation boards, heavy duty cut-outs and underground connection boxes. Can also be fitted in pole or wall mounted outdoor service fuse links.

Standard:	BS88 Part 5
Rated voltage:	415Vac
Rated current:	20 to 800A
Breaking capacity:	80kA
Operating class:	gG
Sizes:	76, 82 and 92mm centres
Fuse holders:	Designed to be used with wedge type fuse carriers
Applications:	Utilities (Available in cylindrical slotted or non slotted tag versions)



### Bussmann series BS88 'J' type industrial fuse links

Item no.	Amps	Fuse holder	Volts	Dim	Box qty
20MJ25-6	20				
32MJ25-6	32				
40MJ25-6	40				
63MJ25-6	63				
80MJ25-6	80		415	46 x 39 mm	5
100MJ25-6	100				
125MJ25-6	125				
160MJ25-6	160				
200MJ25-6	200				
250MJ25-6	250				
63MJ26-6	63				
80MJ26-6	80				
100MJ26-6	100				
125MJ26-6	125		415	76mm	5
160MJ26-6	160				
200MJ26-6	200				
250MJ26-6	250				
20MJ30-8	20				
32MJ30-8	32				
40MJ30-8	40				
50MJ30-8	50		415	82mm	5
63MJ30-8	63				
80MJ30-7	80				
100MJ30-7	100				
125MJ30-7	125				
160MJ30-7	160				
200MJ30-7	200				
250MJ30-7	250		415	82mm	5
315MJ30-7	315				
355PJ30-7	355				
400PJ30-7	400				
20MJ31-8	20				
25MJ31-8	25				
32MJ31-8	32				
40MJ31-8	40				
50MJ31-8	50				
63MJ31-8	63				
80MJ31-7	80				
100MJ31-7	100		415	92mm	5
125MJ31-7	125				
160MJ31-7	160				
200MJ31-7	200				
250MJ31-7	250				
315MJ31-7	315				
355PJ31-7	355				
400PJ31-7	400				



MJ30-8



MJ31-7

# Low Voltage Circuit Protection & Switchgear

## LV Fuse gear

### House Service Cut-Out Fuse Links and Fuse Holders

Cylindrical fuse links to be used in connection with house service cut-out for utility/residential applications. Modular fuse holders to be used with our KR85 and LR85 range.

- Standard: ASTA Certified and tested in accordance to BS1361 and AS2005
- Rated voltage: 415Vac
- Rated current: 20 to 100A
- Breaking capacity: 33kA
- Operating class: gG
- Sizes: 22.2 and 30.2mm
- Fuse holders: 60/80SP for KR Series or 100SP for LR Series
- Applications: Protection of incoming cables into residential and commercial properties



### Bussmann series BS88 industrial fuse links and fuse holders

Item no.	Description	Amps	Fuse	Volts	Box qty
<b>House service fuse holders.</b>					
<b>HSB30BWI</b>	Back wire, black				
<b>HSB30FWI</b>	Front wire, black				
<b>HSB30BWCLI</b>	Back wire, clear	100	LR85	415	10
<b>HSB30FWCLI</b>	Front wire, clear				
<b>HSB22BW</b>	Back wire, black				
<b>HSB22FW</b>	Front wire, black				
<b>HSB22BWCL</b>	Back wire, clear	100	KR85	415	10
<b>HSB22FWCL</b>	Front wire, clear				
<b>HSB22BWCL-Q*</b>	Back wire, clear	125		415	10
<b>HSB22FWCL-Q*</b>	Front wire, clear				
Complete with link and fixing screws - Queensland only					
<b>HSB22BW-V</b>	Back wired	100	KR85	415	10
Complete with two-hole fixing - Victoria only					



House service fuse holder clear



House service fuse holder black

Item no.	Amps	Fuse holder	Volts	Dim	Box qty
<b>House service fuse links.</b>					
<b>5KR85</b>	5				
<b>10KR85</b>	10				
<b>15KR85</b>	15				
<b>20KR85</b>	20				
<b>25KR85</b>	25				
<b>30KR85</b>	30	HSB22*	415	22 X 57 mm	20
<b>40KR85</b>	40				
<b>45KR85</b>	45				
<b>50KR85</b>	50				
<b>60KR85</b>	60				
<b>80KR85</b>	80				
<b>100KR85</b>	100				
<b>30LR85</b>	30	HSB30*	415	30 X 57 mm	20
<b>40LR85</b>	40				
<b>50LR85</b>	50				
<b>60LR85</b>	60				
<b>80LR85</b>	80				
<b>100LR85</b>	100				



100KR85



80LR85

**LV Fuse gear**

**Bussmann series BS88 industrial fuse links**

Item no.	Amps	Fuse holder	Volts	Dim	Box qty
<b>Consumer fuse links.</b>					
C180-1A	1		250	6.3 x 25 mm	10
C180-2A	2				
C180-3A	3				
C180-5A	5				
C180-7A	7				
C180-10A	10				
C180-13A	13				



C180-5A

SMD2	2		415	12.7 x 29 mm	10
SMD4	4				
SMD6	6				
SMD8	8				
SMD10	10				
SMD16	16				
SMD20	20				
SMD25	25				
SMD32	32				

C55	5	415	6.3 x 25mm	20
C1515	15	415	10.3 x 26mm	
C1520	20	415	12.7 x 29mm	
C3030	30	415	16.7 x 35mm	
C4545	45	415		



C1520

Item no.	Description	Amps	Volts	Dim	Box qty
<b>Joint service / nato fuse links</b>					
059-0107	Ferrule	0.25	440	6.3 x 32mm	25
059-0108	Ferrule	0.5			
059-0109	Ferrule	1			
059-0110	Ferrule	2			
059-0111	Ferrule	3			
059-0112	Ferrule	5			
059-0113	Ferrule	7			
011-9925	Ferrule	10			
011-9926	Ferrule	15			
059-0140	Ferrule	0.5			
059-0141	Ferrule	1			
059-0142	Ferrule	2			
059-0143	Ferrule	3			
059-0144	Ferrule	5			
059-0145	Ferrule	7			
059-0146	Ferrule	10			
059-0147	Ferrule	15			
011-9483	Ferrule	20			



059-0144

## LV Fuse gear

### Bussmann series BS88 industrial fuse links



059-0114



059-0148



059-0123

Item no.	Description	Amps	Fuse holder	Volts	Dim	Box qty			
<b>Joint service / nato fuse links</b>									
059-0114	Offset bolted tag	0.5							
059-0115	Offset bolted tag	1							
059-0116	Offset bolted tag	2							
059-0117	Offset bolted tag	3							
059-0118	Offset bolted tag	5		440	Tag 45mm Fix Ctr	25			
059-0119	Offset bolted tag	7							
059-0120	Offset bolted tag	10							
059-0121	Offset bolted tag	15							
011-9679	Offset bolted tag	20							
012-0140	Offset bolted tag	30							
059-0148	Ferrule	10					440	16.7 X 38 mm	25
059-0149	Ferrule	15							
059-0150	Ferrule	20							
059-0151	Ferrule	30							
059-0122	Offset bolted tag	10		440	Tag 56mm Fix Ctr	25			
059-0123	Offset bolted tag	15							
059-0124	Offset bolted tag	20							
059-0125	Offset bolted tag	30							
012-0067	Offset bolted tag	40							
011-9127	Offset bolted tag	50							
012-0141	Offset bolted tag	60							

### Bussmann series mining & traction fuses & fuse holders - 1200V



HD36



RSL63H

Item no.	Description	Amps	Fuse holder	Volts	Dim	Box qty			
<b>Mining / traction fuse links - 1200V.</b>									
1HD36		1							
2HD36	TAC2	2							
4HD36	TAC4	4							
6HD36	TAC6	6		1200 Vac 750 Vdc	122 mm	10			
10HD36	TAC10	10							
15HD36	TAC16	15							
20HD36	TAC20	20							
25HD36	TAC25	25							
30HD36	TAC32	30							
35KC36	TSC35	35					1200 Vac 750 Vdc	122 mm	10
40KC36		40							
50KC36	TSC50	50							
60KC36	TSC63	60							
NBC-80	TFC80	80		1200 Vac 1000 Vdc	168 mm	1			
NBC-100	TFC100	100							
NBC-125	TFC125	125							
NBC-150	TFC150	150							
NBC-200	TFC200	200							
RSL63H	Front wired			1200 Vac 750 Vdc	122 mm	1			
RSL63P	F-wired / b-stud	63							
RSL63PH	Back stud								

## LV Fuse gear

### IEC Cylindrical Fuse Links and Fuse Holders

Cylindrical fuse links for industrial applications, class gG. Available with indicator or striker.  
 Cylindrical fuse links for industrial applications, class aM (Motor protection). Available with indicator.  
 Modular fuse holders specifically designed for the protection of general industrial and commercial applications such as power distribution, lighting, cable and motor protection.

Standard:	IEC 60269
Rated voltage:	400, 500 and 690Vac
Rated current:	0.5 to 125A
Breaking capacity:	20 to 120kA
Operating class:	gG and gM
Sizes:	8x31, 10x38, 14x51 and 22x58mm
Fuse holders:	Full range of fuse holders available (CH Series)
Applications:	Industrial and commercial



### Bussmann series DIN industrial fuses & fuse holders

Item no.	Amps	Type	Fuse holder	Volts	Dim	Box qty
<b>Cylindrical fuses.</b>						
<b>C08G (A)</b>	2, 4, 6, 10, 16, 20, 25, 32	gG		400	8.5 X 31mm	10
<b>C08M(A)</b>	2, 4, 6, 10, 16, 20, 25, 33	aM				
<b>C10G (A)</b>	0.5, 1, 2, 4, 6, 8, 10, 16, 20, 25, 32	gG	CHM1DU	500	10 X 38mm	10
<b>C10M(A)</b>	0.5, 1, 2, 4, 6, 8, 10, 16, 20, 25, 33	aM				
<b>C14G (A)</b>	0.5, 1, 2, 4, 6, 8, 10, 16, 20, 25, 32, 40, 50	gG	CH141B	690	14 X 51mm	10
<b>C14GM(A)</b>	0.5, 1, 2, 4, 6, 8, 10, 16, 20, 25, 32, 40, 51	aM				
<b>C22G (A)</b>	0.5, 1, 2, 4, 6, 8, 10, 16, 20, 25, 32, 40, 50, 63, 80, 100	gG	CH221B	690	22 X 51mm	10
<b>C22M(A)</b>	0.5, 1, 2, 4, 6, 8, 10, 16, 20, 25, 32, 40, 50, 63, 80, 100	aM				



C08G



C10G



C14G



C22M

Item no.	Amps	Fuse size	Volts	Box qty
<b>Cylindrical fuse holders.</b>				
<b>CHM1DU</b>	32	10 x 38mm	690	12
<b>CH141B</b>	50	14 x 51mm	690	8
<b>CH221B</b>	125	22 x 58mm	690	6
<b>CHCC1DU</b>	32	10 x 38mm Rejection	690	12
<b>AL-D</b>	Multi pole fuseholder connectors - 10 x 38			Pack 12



CHM1DU

Item no.	Suits fuse links	Amps	Volts	Poles	Box qty
<b>CCP - compact circuit protector.</b>					
<b>CCP-1-30CC</b>	LP-CC, KTK-R,	30	600 Vac	1	12
<b>CCP-3-30CC</b>	FNQ-R			3	
<b>CCP-1-30M</b>	KTK, FNQ			1	
<b>CCP-3-30M</b>	C10G, C10M			3	8
<b>CCP-1-DCM</b>	PVM		80Vdc	1	
<b>CCP-PLC-IND</b>	Remote fuse indicator				
<b>CCP-AUX</b>	Auxillarm contact				
<b>DIN industrial fuse links - 500V - gG.</b>					



CCP - compact circuit protector

## LV Fuse gear

### NH DIN Industrial Fuse Links & Bases

A square bodied range of industrial fuse links for a wide variety of applications. NH fuse bases with thermoplastic bodies, DIN rail and/or screw mounting (size 4 screw mounting only). Range of accessories including phase barriers, IP20 finger-safe protection kits and neutral links available.

- Standard: IEC 60269 and VDE 0636
- Rated voltage: 400, 500 and 690Vac
- Rated current: 2 to 1250A
- Breaking capacity: 120kA
- Operating class: gG and aM
- Sizes: 000 to 4 (size 4 bolted only version)
- Fuse holders: Available for all fuse links sizes
- Applications: Industrial & commercial (Available with Dual Indication and Insulated Metal Gripping Lugs)



### Bussmann series DIN industrial fuses & fuse holders

Item no.	Type	Fuse holder	Amps	Volts	Size	Box qty
10NHG00B			10			
16NHG00B			16			
20NHG00B			20			
25NHG00B			25			
32NHG00B	gG/gL (Standard)	SD00-D	32	500	000	3
40NHG00B		TD00-D	40			
50NHG00B			50			
63NHG00B			63			
80NHG00B			80			
100NHG00B			100			
125NHG00B	gG/gL (Standard)	SD00-D	125	500	00	3
160NHG00B		TD00-D	160			
10NHG01B			10			
16NHG01B			16			
20NHG01B			20			
25NHG01B			25			
32NHG01B			32			
40NHG01B			40			
50NHG01B	gG/gL (Standard)		50	500	1	3
63NHG01B		SD1-D	63			
80NHG01B		TD1-D	80			
100NHG01B			100			
125NHG01B			125			
160NHG01B			160			
200NHG1B			200			
224NHG1B			224			
250NHG1B			250			
50NHG02B			50			
63NHG02B			63			
80NHG02B			80			
100NHG02B			100			
125NHG02B			125			
160NHG02B	gG/gL (Standard)	SD2-D	160	500	2	3
200NHG02B		TD2-D	200			
224NHG02B			224			
250NHG02B			250			
315NHG2B			315			
355NHG2B		355				
400NHG2B			400			

DIN industrial fuse links - 500V - gG.



NHG000B



NHG01B



NHG02B

**LV Fuse gear**

**Bussmann series DIN industrial fuses & fuse holders**

Item no.	Type	Fuse holder	Amps	Volts	Size	Box qty
250NHG03B	gG/gL (Standard)	SD3-D TD3-D	250	500	3	3
315NHG03B			315			
355NHG03B			355			
400NHG03B			400			
500NHG3B			500			
630NHG3B			630			



NHG03B

**DIN industrial fuse links - 690V - gG.**

10NHG000B-690	gG/gL (Standard)	SD00-D TD00-D	10	690	000	3
16NHG000B-690			16			
20NHG000B-690			20			
25NHG000B-690			25			
32NHG000B-690			32			
40NHG000B-690			40			
50NHG00B-690	gG/gL (Standard)	SD00-D TD00-D	50	690	00	3
63NHG00B-690			63			
80NHG00B-690			80			
100NHG00B-690			100			



NHG000B-690

50NHG1B-690	gG/gL (Standard)	SD1-D TD1-D	50	690	1	3
63NHG1B-690			63			
80NHG1B-690			80			
100NHG1B-690			100			
125NHG1B-690			125			
160NHG1B-690			160			
63NHG2B-690	gG/gL (Standard)	SD2-D TD2-D	63	690	2	3
80NHG2B-690			80			
100NHG2B-690			100			
125NHG2B-690			125			
160NHG2B-690			160			
200NHG2B-690			200			
224NHG2B-690			224			
250NHG2B-690			250			
315NHG2B-690			315			
250NHG3B-690			gG/gL (Standard)			
315NHG3B-690	315					
355NHG3B-690	355					
400NHG3B-690	400					
500NHG3B-690	500					



NHG1B-690

**DIN industrial fuse links - 690V - aM - motor start.**

6NHM000B-690	aM (Motor start)	SD00-D TD00-D	6	690	000	3
10NHM000B-690			10			
16NHM000B-690			16			
20NHM000B-690			20			
25NHM000B-690			25			
32NHM000B-690			32			
40NHM000B-690	40					
50NHM00B-690	aM (Motor start)	SD00-D TD00-D	50	690	00	3
63NHM00B-690			63			
80NHM00B-690			80			
100NHM00B-690			100			
50NHM1B-690	aM (Motor start)	SD1-D TD1-D	50	690	1	3
63NHM1B-690			63			
80NHM1B-690			80			
100NHM1B-690			100			
125NHM1B-690			125			
160NHM1B-690			160			



6NHM000B-690



## LV Fuse gear

### Busmann series DIN industrial fuses & fuse holders



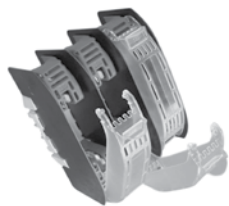
NHM2B-690

Item no.	Type/Description	Fuse holder	Amps	Volts	Size	Box qty
<b>DIN industrial fuse links - 690V - aM - motor start.</b>						
125NHM2B-690	aM (Motor start)	SD2-D TD2-D	125	690	2	3
160NHM2B-690			160			
200NHM2B-690			200			
224NHM2B-690			224			
250NHM2B-690			250			
315NHM2B-690			315			
355NHM2B-690						
250NHM3B-690	aM (Motor start)	SD3-D TD3-D	250	690	3	3
315NHM3B-690			315			
355NHM3B-690			355			
400NHM3B-690			400			
500NHM3B-690			500			



TD00-D

<b>Fuse holders to suit DIN industrial fuse links</b>						
SD00-D	Single pole base		160	690	00	1
SD1-D			250		1	
SD2-D			400		2	
SD3-D			630		3	
TD00-D	Triple pole base		160	690	00	1
TD1-D			250		1	
TD2-D			400		2	
TD3-D			630		3	



TD00-IP20

FC00	Fuse cover to suit '00'				00	
FC01	Fuse cover to suit '1'				1	
FC1-2	Fuse cover to suit '2'				2	1
FC3	Fuse cover to suit '3'				3	
CS00	Terminal cover '00'				00	
CS1	Terminal cover '1'				1	
CS2	Terminal cover '2'				2	1
CS3	Terminal cover '3'				3	
BC00	Connector "00"				00	1
BC1-2	Connector "1 & 2"				1 & 2	1
BC3	Connector "3"				3	1
TD00-IP20	Triple pole protect kit "00"				00	1
TD1-IP20	Triple pole protect kit "1"				1	1
TD2-IP20	Triple pole protect kit "2"				2	1
TD3-IP20	Triple pole protect kit "3"				3	1
SDL00	Neutral link "00"				00	1
SDL1	Neutral link "1"				1	1
SDL2	Neutral link "2"				2	1
SDL3	Neutral link "3"				3	1
BVL50	Micro switch					1
FEH	Extraction handle					1

Item no.	Description	Poles	Amps	Volts	Size	Box qty
EBH00O3TM8	Horizontal disconnect	3	160	690	00	
EBH1O3TM1		3	250		1	
EBH2O3TM1		3	400		2	
EBH3O3TM2		3	630		3	

## LV Fuse gear

### D & DO Fuse Links and Fuse Bases

Class gG D and DO fuse links for industrial and domestic applications. All these fuse links incorporate a visual indicator of fuse operation.

Standard:	IEC 60269 and VDE 0636
Rated voltage:	400 and 500Vac
Rated current:	2 to 100A
Breaking capacity:	50kA
Operating class:	Time-delay and ultra-rapid
Sizes:	D1 to DV, D01 to D03
Fuse holders:	Available for all fuse links sizes
Applications:	Industrial & commercial (DIN rail mounting with accessories available: screw caps, gauge rings, etc.)



### Bussmann series DIN industrial fuses & fuse holders

Item no.	Description	Body dim	Amps	Volts	Size	Box qty
<b>2NZ01</b>	Neozed fuse links		2			
<b>4NZ01</b>	Neozed fuse links		4			
<b>6NZ01</b>	Neozed fuse links	36 X 11mm	6	440	D01	5
<b>10NZ01</b>	Neozed fuse links		10			
<b>16NZ01</b>	Neozed fuse links		16			
<b>20NZ02</b>	Neozed fuse links		20			
<b>25NZ02</b>	Neozed fuse links		25			
<b>35NZ02</b>	Neozed fuse links	36 X 15mm	35	440	D02	5
<b>50NZ02</b>	Neozed fuse links		50			
<b>63NZ02</b>	Neozed fuse links		63			
<b>80NZ03</b>	Neozed fuse links	43 X 22.5mm	80	440	D03	5
<b>100NZ03</b>	Neozed fuse links		100			
<b>2NZ01R</b>	Neozed fuse links - ultra rapid		2			
<b>4NZ01R</b>	Neozed fuse links - ultra rapid		4			
<b>6NZ01R</b>	Neozed fuse links - ultra rapid	36 X 11mm	6	440	D01	5
<b>10NZ01R</b>	Neozed fuse links - ultra rapid		10			
<b>16NZ01R</b>	Neozed fuse links - ultra rapid		16			
<b>20NZ02R</b>	Neozed fuse links - ultra rapid		20			
<b>25NZ02R</b>	Neozed fuse links - ultra rapid		25			
<b>35NZ02R</b>	Neozed fuse links - ultra rapid	36 X 15mm	35	440	D02	5
<b>50NZ02R</b>	Neozed fuse links - ultra rapid		50			
<b>63NZ02R</b>	Neozed fuse links - ultra rapid		63			
<b>2D16</b>	Diazed fuse links - standard		2			
<b>4D16</b>	Diazed fuse links - standard		4			
<b>6D16</b>	Diazed fuse links - standard		6			
<b>10D16</b>	Diazed fuse links - standard	50 x 13mm	10	500	D1	5
<b>16D16</b>	Diazed fuse links - standard		16			
<b>20D16</b>	Diazed fuse links - standard		20			
<b>25D16</b>	Diazed fuse links - standard		25			
<b>2D27</b>	Diazed fuse links - standard		2			
<b>4D27</b>	Diazed fuse links - standard		4			
<b>6D27</b>	Diazed fuse links - standard		6			
<b>10D27</b>	Diazed fuse links - standard	50 x 21.5mm	10	500	D11	5
<b>16D27</b>	Diazed fuse links - standard		16			
<b>20D27</b>	Diazed fuse links - standard		20			
<b>25D27</b>	Diazed fuse links - standard		25			
<b>35D33</b>	Diazed fuse links - standard		35			
<b>50D33</b>	Diazed fuse links - standard	50 x 27mm	50	500	D111	5
<b>63D33</b>	Diazed fuse links - standard		63			
<b>80D125</b>	Diazed fuse links - standard	50 x 33mm	80	500	D1V	1
<b>100D125</b>	Diazed fuse links - standard		100			



NZ01



16D27

## LV Fuse gear

### Busmann series DIN industrial fuses & fuse holders

Item no.	Description	Body dim	Amps	Volts	Size	Box qty
<b>125D200</b>	Diazed fuse links - standard		125			
<b>160D200</b>	Diazed fuse links - standard	50 x 46mm	160	500	DV	1
<b>200D200</b>	Diazed fuse links - standard		200			
<b>2D16Q</b>	Diazed fuse links - quick		2			
<b>4D16Q</b>	Diazed fuse links - quick		4			
<b>6D16Q</b>	Diazed fuse links - quick		6			
<b>10D16Q</b>	Diazed fuse links - quick	50 x 13mm	10	500	D1	5
<b>16D16Q</b>	Diazed fuse links - quick		16			
<b>20D16Q</b>	Diazed fuse links - quick		20			
<b>25D16Q</b>	Diazed fuse links - quick		25			
<b>2D27Q</b>	Diazed fuse links - quick		2			
<b>4D27Q</b>	Diazed fuse links - quick		4			
<b>6D27Q</b>	Diazed fuse links - quick		6			
<b>10D27Q</b>	Diazed fuse links - quick	50 x 21.5mm	10	500	D11	5
<b>16D27Q</b>	Diazed fuse links - quick		16			
<b>20D27Q</b>	Diazed fuse links - quick		20			
<b>25D27Q</b>	Diazed fuse links - quick		25			
<b>35D33Q</b>	Diazed fuse links - quick		35			
<b>50D33Q</b>	Diazed fuse links - quick	50 x 27mm	50	500	D111	5
<b>63D33Q</b>	Diazed fuse links - quick		63			
<b>2D16R</b>	Diazed fuse links - ultra rapid		2			
<b>4D16R</b>	Diazed fuse links - ultra rapid		4			
<b>6D16R</b>	Diazed fuse links - ultra rapid		6			
<b>10D16R</b>	Diazed fuse links - ultra rapid	50 x 13mm	10	500	D1	5
<b>16D16R</b>	Diazed fuse links - ultra rapid		16			
<b>20D16R</b>	Diazed fuse links - ultra rapid		20			
<b>25D16R</b>	Diazed fuse links - ultra rapid		25			
<b>2D27R</b>	Diazed fuse links - ultra rapid		2			
<b>4D27R</b>	Diazed fuse links - ultra rapid		4			
<b>6D27R</b>	Diazed fuse links - ultra rapid		6			
<b>10D27R</b>	Diazed fuse links - ultra rapid	50 x 21.5mm	10	500	D11	5
<b>16D27R</b>	Diazed fuse links - ultra rapid		16			
<b>20D27R</b>	Diazed fuse links - ultra rapid		20			
<b>25D27R</b>	Diazed fuse links - ultra rapid		25			
<b>35D33R</b>	Diazed fuse links - ultra rapid		35			
<b>50D33R</b>	Diazed fuse links - ultra rapid	50 x 27mm	50	500	D111	5
<b>63D33R</b>	Diazed fuse links - ultra rapid		63			



6D16Q



25D16R

Fuse bases & gauge rings are available, please contact customer service - 02 8787 2730.

**LV Fuse gear**

**North American Fuse Links and Fuse Holders**

Standard: UL Listed and CSA Certified  
 Rated voltage: Up to 600Vac  
 Rated current: 0.1 to 6000A  
 Breaking capacity: Up to 300kA  
 Operating class: Time-delay, fast-acting as per UL requirements  
 Sizes: Midget, Class CC, G, H, J, K5, H, L, RK5, RK1 and T  
 Fuse holders: Modular Fuse Holder (finger protection) for Midget and Class CC fuse links  
 Finger-safe protected fuse base for Class J fuse links  
 Applications: Suitable for applications or equipments to be exported to the USA or other UL markets



**Bussmann series North American fuse links & fuse holders.**

Item no.	Amp rating	Size	Volts	Type	Box qty
<b>Supplementary power fuse links (ferrule)</b>					
<b>BBS (A)</b>	1/10 to 5	10 x 35mm	600	Fast	10
	6, 7, 8, 10		250		
	12, 15, 20, 25, 30		48		
<b>KTQ (A)</b>	1, 1.6, 2, 3, 4, 5, 6		250	T/Delay	
<b>BAF (A)</b>	2/10 to 15		250	Fast	
	20, 25, 30		125		
<b>BAN (A)</b>	1, 2, 4, 6, 8, 10, 12, 15, 20, 25, 30		250	Fast	
<b>KTK (A)</b>	1/10 to 50		600	Fast	
<b>DCM (A)</b>	1/10 to 30		600V ac / dc	Fast	
<b>KLM (A)</b>	1/10 to 30	10 x 38mm	690	Fast	10
	0.1, 0.125, 0.15, 0.2, 0.25, 0.3, 0.4, 0.5, 0.6, 0.75, 1, 1.125, 1.25, 1.5, 2, 2.25, 2.5, 2.8, 3, 3.25, 3.5, 4, 4.5, 5, 5.8, 6, 6.25, 7, 8, 9, 10, 12, 15		250		
	20, 25, 30		125		
<b>FNQ (A)</b>	1/10 to 30		500	T/Delay	
	1/10 to 8/10		250		
<b>FNA (A)</b>	1 to 15		125	T/Delay	
	20 to 30		32		
<b>DMM-D-(A)</b>	44/100 & 11		1000	Fast	
<b>Supplementary power fuse links - rejection - Class CC.</b>					
<b>KTK-R (A)</b>	1/10 to 30	10 X 38mm	600	Fast	10
<b>LP-CC (A)</b>	1/4 to 30			T/Delay	
<b>FNQ-R (A)</b>	1/4 to 30				
<b>Supplementary power fuse links - Class G.</b>					
<b>SC</b>	1/2 to 20	10 X 33	480	T/Delay	
	25, 30	10 X 42			
	35 to 60	10 X 57			
<b>Fuseholders to suit supplementary power fuse links.</b>					
<b>BM6031SQ</b>	30		600	1	1
<b>BM6033SQ</b>				3	
<b>Fuseholders to suit supplementary power fuse links - Class CC.</b>					
<b>BC6031SQ</b>	30		600	1	1
<b>BC6033SQ</b>				3	



BAF



FNA



KTK-R



SC

## LV Fuse gear

Busmann series North American fuse links & fuse holders.



JYN



JJS



T60030-3CR



H30100-1SR

Item no.	Amp rating	Size	Volts	Type	Box qty
<b>Power fuse links - Class T.</b>					
<b>JYN (A)</b>	1, 2, 3, 6, 10, 15, 20, 25, 30	22 X 10	300	Very Fast	10
	35, 40, 45, 50, 60	23 X 14			
	70, 80, 90, 100	40.0			
	110, 125, 150, 175, 200	43.0			
	225, 250, 300, 350, 400	47.0			
	450, 500, 600	52.0			
	700, 800	56.0			
	1000, 1200	64.0			
<b>JJS (A)</b>	1, 2, 3, 6, 10, 15, 20, 25, 30	38 X 14	600	Very Fast	10
	35, 40, 45, 50, 60	40 X 21			
	70, 80, 90, 100	60.0			
	110, 125, 150, 175, 200	64.0			
	225, 250, 300, 350, 400	69.0			
	450, 500, 600	75.0			
	800	81.0			
	<b>Power fuse links - general purpose</b>				
<b>NON (A)</b>	0.125, 0.5, .75, 1, 1.5, 2, 2.5, 3, 4, 5, 6, 7, 8, 10, 12, 15, 20, 25, 30	10 x 51	250	Non Delay	10
	35, 40, 45, 50, 60	21 x 76			
	70, 80, 90, 100	149.0			
	110, 125, 150, 175, 200	181.0			
	225, 250, 300, 350, 400	219.0			
<b>NOS (A)</b>	1, 2, 2.5, 3, 4, 5, 6, 7, 8, 10, 12, 15, 20, 25, 30	21 x 127	600	Non Delay	10
	35, 40, 45, 50, 60	27 x 140			
	70, 80, 90, 100	200.0			
	110, 125, 150, 175, 200	244.0			
	225, 250, 300, 350, 400	295.0			
450, 500, 600	340.0				
<b>Fuse holders to suit power fuse links - Class T.</b>					
<b>T30030-2CR</b>	30	300	2	1	
<b>T30030-3CR</b>			3		
<b>T30060-2CR</b>			2		
<b>T30060-3CR</b>			3		
<b>T30100-1CR</b>			1		
<b>T30100-3CR</b>			3		
<b>T60030-1CR</b>	60	600	1	1	
<b>T60030-3CR</b>			3		
<b>T60060-1CR</b>			1		
<b>T60060-3CR</b>			3		
<b>T60100-1CR</b>			1		
<b>T60100-3CR</b>			3		
<b>Fuse holders to suit power fuse links - general purpose.</b>					
<b>H30030-2SR</b>	30	300	1	1	
<b>H30030-3SR</b>			3		
<b>H30060-2SR</b>			2		
<b>H30060-3SR</b>			3		
<b>H30100-1SR</b>			1		
<b>H30100-3SR</b>			3		
<b>H60030-1SR</b>	60	600	1	1	
<b>H60030-3SR</b>			3		
<b>H60060-1SR</b>			1		
<b>H60060-3SR</b>			3		
<b>H60100-1SR</b>			1		
<b>H60100-3SR</b>			3		

**LV Fuse gear**

Bussmann series North American fuse links & fuse holders.

Item no.	Amp rating	Size	Volts	Type	Box qty
<b>Power fuse links - Class RK1.</b>					
<b>LPN-RK (A) SP</b>	1/10 to 30	14 x 51	250	Dual element, time delay	10
	35, 40, 45, 50, 60	21 x 76			1
	70, 80, 90, 100	149.0			
	110, 125, 150, 175, 200	181.0			
	225, 250, 300, 350, 400	219.0			
	450, 500, 600	264.0			
<b>LPS-RK (A) SP</b>	1/10 to 30	21 X 127	600	Dual element, time delay	10
	35, 40, 45, 50, 60	27 X 140			1
	70, 80, 90, 100	200.0			
	110, 125, 150, 175, 200	245.0			
	225, 250, 300, 350, 400	295.0			
	450, 500, 600	340.0			
<b>KTN-R (A)</b>	1 to 30	14 x 51	250	Fast acting	10
	35, 40, 45, 50, 60	21 x 76			1
	70, 80, 90, 100	149.0			
	110, 125, 150, 175, 200	181.0			
	225, 250, 300, 350, 400	219.0			
	450, 500, 600	264.0			
<b>KTS-R (A)</b>	1 to 30	21 X 127	600	Fast acting	10
	35, 40, 45, 50, 60	27 X 140			1
	70, 80, 90, 100	200.0			
	110, 125, 150, 175, 200	245.0			
	225, 250, 300, 350, 400	295.0			
	450, 500, 600	340.0			
<b>FRN-R (A)</b>	100mA to 30A	14 x 51	250	Dual element, time delay	10
	35, 40, 45, 50, 60	21 x 76			1
	70, 80, 90, 100	149.0			
	110, 125, 150, 175, 200	181.0			
	225, 250, 300, 350, 400	219.0			
	450, 500, 600	264.0			
<b>FRS-R (A)</b>	100mA to 30A	21 X 127	600	Dual element, time delay	10
	35, 40, 45, 50, 60	27 X 140			1
	70, 80, 90, 100	200.0			
	110, 125, 150, 175, 200	245.0			
	225, 250, 300, 350, 400	295.0			
	450, 500, 600	340.0			
<b>Power fuse links - Class J low peak.</b>					
<b>LPJ- (A) SP</b>	1 to 30	21 X 58	600	Dual element, time delay	10
	35, 40, 45, 50, 60	27 X 60			1
	70, 80, 90, 100	92.0			
	110, 125, 150, 175, 200	111.0			
	225, 250, 300, 350, 400	133.0			
	450, 500, 600				
<b>JKS- (A)</b>	1 to 30	21 X 58	600	Quick acting	10
	35, 40, 45, 50, 60	27 X 60			1
	70, 80, 90, 100	92.0			
	110, 125, 150, 175, 200	111.0			
	225, 250, 300, 350, 400	133.0			
	450, 500, 600	152.0			



LPN-RK



LPS-RK



KTN-R



KTS-R



FRN-R



FRS-R



LPJ



JKS

## LV Fuse gear

Busmann series North American fuse links & fuse holders.



KTU



KRP-C

Item no.	Amp rating	Size	Volts	Type	Box qty
<b>Power fuse links - Class L low peak.</b>					
KTU (A)	601 to 1200	Contact cooper electrical for size	600	Fast acting type	1
	1500, 2000				
	2500, 3000				
	3500, 4000				
	4500, 5000				
	6000				
KLU (A)	601 to 1200	Contact cooper electrical for size	600	Time delay type	1
	1500, 1600				
	1800, 2000				
	2500, 3000				
	4000				
KRP-C (A) SP	601 to 1200	Contact cooper electrical for size	600	Time delay type	1
	1350, 1400, 1500, 1600, 1800, 1900, 2000				
	2001, 2400, 2500, 3000				
	3500, 3800, 4000				
	4500, 5000				
	6000				



R300



J600

Item no.	Amp	Volts	Poles	Box qty
<b>Fuse holders to suit power fuse links - Class RK1 &amp; RK5.</b>				
R30030-1SR	30	300	1	1
R30030-3SR			3	
R30060-2CR			2	
R30060-3CR	60	300	3	
R30100-1CR			1	
R30100-3CR			3	
R60030-1CR	30	600	1	
R60030-3CR			3	
R60060-1CR			1	
R60060-3CR	60	600	3	
R60100-1CR			1	
R60100-3CR			3	
<b>Fuse holders to suit power fuse links - Class RK1 &amp; RK5.</b>				
J60030-1CR	30	600	1	1
J60030-3CR			3	
J60060-1CR			1	
J60060-3CR	60	600	3	
J60100-1CR			1	
J60100-3CR			3	

## LV Fuse gear

### Ferrule Style Fuse Links

Standard:	UL/CSA
Rated voltage:	700Vac. DC ratings available
Rated current:	1 to 100A
Breaking capacity:	20kA
Operating class:	aR
Sizes:	From to 6x32 to 25x146mm
Applications:	Used for the protection of DC common bus, DC drives, power converters/rectifiers and reduced voltage starters



### Bussmann series high speed fuse links.

Item no.	Description	Body dim	Amps	Volts	I <sup>2</sup> T	Box qty
<b>High speed fuse links - ferrule type.</b>						
FWA-5A10F			5		8	
FWA-10A10F			10		16	
FWA-15A10F		10 x	15	150	55	10
FWA-20A10F		38mm	20	Vac / Vdc	130	
FWA-25A10F			25		220	
FWA-30A10F			30		400	
FWA-35A21F			35		800	
FWA-40A21F			40	150	1000	10
FWA-45A21F		21 x	45	Vac / Vdc	1300	
FWA-50A21F		51mm	50		1600	
FWA-60A21F			60		2400	
FWX-1A14F			1		0.4	
FWX-2A14F			2		0.1	
FWX-3A14F			3		0.26	
FWX-4A14F			4		0.23	
FWX-5A14F			5	250	13	10
FWX-10A14F		14 x	10	Vac / Vdc	24	
FWX-15A14F		51mm	15		83	
FWX-20A14F			20		200	
FWX-25A14F			25		300	
FWX-30A14F			30		500	
FWX-50A14F			50		1800	
FWH-.250A6F			0.25		0.05	
FWH-.500A6F			0.5		0.25	
FWH-001A6F			1		2	
FWH-002A6F			2		3.5	
FWH-3.15A6F			3.15		7.7	
FWH-005A6F			5		40	
FWH-6.30A6F			6.3		90	
FWH-007A6F		6.3 x	7	500 Vac	125	10
FWH-010A6F		32mm	10		51	
FWH-12.5A6F			12.5		60	
FWH-015A6F			15		146	
FWH-016A6F			16		177	
FWH-020A6F			20		259	
FWH-025A6F			25		345	
FWH-030A6F			30		430	



FWA-5A10F



FWA-45A21F



FWX-15A14F



## LV Fuse gear

Busmann series high speed fuse links.



FWH-500A6F



FWC-6A10F



FWP-1A14F



FWP-25A22F

Item no.	Description	Body dim	Amps	Volts	I <sup>2</sup> T	Box qty			
<b>High speed fuse links - ferrule type.</b>									
FWH-1A14F			1		0.04				
FWH-2A14F			2		0.1				
FWH-3A14F			3		0.23				
FWH-4A14F			4		0.23				
FWH-5A14F			5		6.4				
FWH-6A14F		14 x 51mm	6	500 Vac/ Vdc	6.4	10			
FWH-10A14F			10		13				
FWH-12A14F			12		-				
FWH-15A14F			15		40				
FWH-20A14F			20		105				
FWH-25A14F			25		191				
FWH-30A14F			30		232				
FWC-6A10F					6			30	
FWC-8A10F					8			50	
FWC-10A10F					10			70	
FWC-12A10F		10 x 38mm	12	600 Vac / Vdc	120	10			
FWC-16A10F			16		150				
FWC-20A10F			20		260				
FWC-25A10F			25		390				
FWC-30A10F			32		600				
FWP-1A14F					1			0.41	
FWP-2A14F					2			0.11	
FWP-2.5A14F			2.5		-				
FWP-3A14F			3		0.26				
FWP-4A14F			4		0.23				
FWP-5A14F			5		11				
FWP-10A14F		14 x 51	10	700 Vac / Vdc	22	10			
FWP-15A14F			15		75				
FWP-20A14F			20		180				
FWP-25A14F			25		320				
FWP-30A14F			30		450				
FWP-32A14F			32		600				
FWP-40A14F			40		750				
FWP-50A14F			50		1800				
FWP-20A22F					20			260	
FWP-25A22F					25			410	
FWP-32A22F			32		605				
FWP-40A22F		22 x 58	40	700 Vac / Vdc	750				
FWP-50A22F			50		1600				
FWP-63A22F			63		3080				
FWP-80A22F			80		6600				
FWP-100A22F			100		12500				
FWP-10A14FI					10		22		
FWP-15A14FI			15		75				
FWP-20A14FI			20		180				
FWP-25A14FI	With indicator	14 x 51	25	700 Vac / Vdc	320	10			
FWP-30A14FI			30		450				
FWP-32A14FI			32		600				
FWP-40A14FI			40		750				
FWP-50A14FI			50		1800				

## LV Fuse gear

Bussmann series high speed fuse links.

Item no.	Description	Body dim	Amps	Volts	I <sup>2</sup> T	Box qty
<b>High speed fuse links - ferrule type.</b>						
FWP-20A22FI			20		260	
FWP-25A22FI			25		410	
FWP-32A22FI			32		605	
FWP-40A22FI	With indicator	22 x 58	40	700 Vac / Vdc	750	10
FWP-50A22FI			50		1600	
FWP-63A22FI			63		3080	
FWP-80A22FI			80		6600	
FWP-100A22FI			100		12500	
<hr/>						
FWJ-20A14F						
FWJ-25A14F		14 x 67		1000Vac / 800Vdc		10
FWJ-30A14F						
<hr/>						
FWS-2A20F			2	2000Vac	2.4	
FWS-6A20F			6	1000Vdc	81	
FWS-8A20F			8		192	
FWS-10A20F		20 x 127mm	10	1500Vac	277	10
FWS-12A20F			12	1000Vdc	380	
FWS-15A20F			15		500	
FWL-20A20F			20		1550	
FWL-25A20F			25	1250Vac	2760	
FWL-30A20F			30	1000Vdc	4300	
<hr/>						
FWS-2A20FI			2	2000Vac	2.4	
FWS-6A20FI			6	1000Vdc	81	
FWS-8A20FI			8		192	
FWS-10A20FI		20 x 127mm	10	1500Vac	277	10
FWS-12A20FI	With indicator		12	1000Vdc	380	
FWS-15A20FI			15		500	
FWL-20A20FI			20		1550	
FWL-25A20FI			25	1250Vac	2760	
FWL-30A20FI		30	1000Vdc	4300		



FWJ-25A14F



FWS-6A20F



FWS-12A20FI

## LV Fuse gear

### British Standard high speed Fuse Links

Standard: BS88 part 4 and IEC 60269-4

Rated voltage: 240 and 690Vac

Rated current: 6 to 710A

Breaking capacity: 200kA

Operating class: aR

Sizes: Refer to relevant data sheets, available upon request

Applications: Used for the protection of DC common bus, DC drives, power converters/rectifiers and reduced voltage starters



### Bussmann series high speed fuse links.

Item no.	Description	Fix ctrs	Amps	Volts	I <sup>2</sup> T	Box qty
<b>High speed fuse links - British standard.</b>						
<b>6LCT</b>	GSA5	38mm	6	240Vac 150Vdc	9	10
<b>10LCT</b>	GSA10		10		22	
<b>12LCT</b>			12		32	
<b>16LCT</b>	GSA15		16		100	
<b>20LCT</b>	GSA20		20		160	
<b>25LET</b>	GSA25	42mm	25	240Vac 150Vdc	250	10
<b>32LET</b>			32		450	
<b>35LET</b>	GSA35		35		600	
<b>50LET</b>	GSA50		50		1400	
<b>63LET</b>			63		2200	
<b>80LET</b>	GSA75		80		3800	
<b>100LET</b>	GSA100		100		7500	
<b>125LET</b>			125		7500	
<b>160LET</b>			160		16000	
<b>180LET</b>			180		29000	
<b>160LMT</b>	GSA150	59mm	160	240Vac 150Vdc	16000	1
<b>200LMT</b>	GSA200		200		20000	
<b>250LMT</b>	GSA50		250		40000	
<b>315LMT</b>	GSA300		315		75000	
<b>355LMT</b>	GSA350		355		100000	
<b>400LMT</b>	GSA400		400		160000	
<b>450LMT</b>		450	220000			
<b>400LMMT</b>		59mm	400	240Vac 150Vdc	80000	1
<b>500LMMT</b>	GSA500		500		170000	
<b>630LMMT</b>	GSA630		630		300000	
<b>710LMMT</b>			710		460000	
<b>800LMMT</b>			800		600000	
<b>900LMMT</b>			900		800000	
<b>6CT</b>	GSB5	64mm	6	690Vac 500Vdc	12	20
<b>10CT</b>	GSB10		10		48	
<b>12CT</b>			12		65	
<b>16CT</b>	GSB15		16		110	
<b>20CT</b>	GSB20		20		220	



10LCT



100LET



400LMMT



20CT

**LV Fuse gear**

Bussmann series high speed fuse links.

Item no.	Description	Fix ctrs	Amps	Volts	I <sup>2</sup> T	Box qty
<b>High speed fuse links - British standard.</b>						
25ET	GSG25		25		250	
32ET	GSG30		32		350	
35ET	GSG35		35		500	
40ET	GSG40	64mm	40	690Vac 500Vdc	900	10
45ET	GSG45		45		1100	
56ET	GSG55		56		1500	
63ET	GSG63		63		2000	
80ET	GSG80		80		4000	
35FE	GSG35				35	
40FE	GSG40		40		300	
45FE	GSG45		45		450	
50FE	GSG50	64mm	50	690Vac 500Vdc	600	10
63FE	GSG55		63		750	
71FE			71		950	
80FE	GSG80		80		1500	
90FE	GSG85		90		2100	
100FE			100		2800	
75EET	GSG75		75			
90EET	GSG85	70mm	90	690Vac 500Vdc	4500	5
110EET	GSG110		110		6500	
140EET	GSG150		140		12000	
160EET	GSG160		160		17000	
100FEE		70mm	100	690Vac 500Vdc	2400	5
120FEE	GSG125		120		3100	
140FEE	GSG125		140		3800	
160FEE	GSG160		160		5700	
180FEE			180		8400	
200FEE			200		11400	
180FM	GSG170	85mm	180	690Vac 500Vdc	13500	1
200FM	GSG200		200		18500	
225FM	GSG225		225		26500	
250FM	GSG250		250		37500	
280FM			280		55000	
315FM	GSG315		315		77000	
350FM	GSG325	350	105000			
400FMM	GSG400	85mm	400	690Vac 500Vdc	72500	1
450FMM			450		105000	
500FMM	GSG500		500		150000	
550FMM			550		215000	
630FMM			630		310000	
700FMM			700		420000	



35ET



90EET



180FM



400FMM

## LV Fuse gear

Bussmann series high speed fuse links.



200MT



315MMT

Item no.	Description	Fix ctrs	Amps	Volts	I <sup>2</sup> T	Box qty	
<b>High speed fuse links - British standard.</b>							
165MT	GSGB150	85mm	160	690Vac 350Vdc	25000		
180MT			180		38000		
200MT	GSGB200		200		58000		
250MT	GSGB250		250		110000		
280MT			280		150000		
315MT			315		180000		
355MT			355		200000		
180MMT		85mm	180	690Vac 350Vdc	18000		
200MMT			200		23000		
250MMT			250		40000		
280MMT			280		70000		
315MMT			315		91000		
355MMT			355		140000		
400MMT	GSGB400		400		220000		
450MMT	GSGB450		450		320000		
500MMT	GSGB500		500		450000		
550MMT			550		640000		
630MMT			630		720000		
700MMT		700	850000				
<b>High speed fuse links - British standard accessories.</b>							
MAI	Microswitch and Adaptor			250			
MC-250	Trip Indicator Fuse Link and clips to suit LMT LMMT					1	
MC-600	Trip Indicator Fuse Link and clips to suit FM FMM						
MCLIP	Clips to suit FM FMM LMT LMMT						
TI250	Trip Indicator Fuse			250		1	
TI500	Trip Indicator Fuse			500			
TI600	Trip Indicator Fuse			600			
TI700	Trip Indicator Fuse			700			
TI1100	Trip Indicator Fuse			1100			
TI2000	Trip Indicator Fuse			1200			
TI1500	Trip Indicator Fuse			1500			
TI2500	Trip Indicator Fuse			2500			
LSCR1-K	General Purpose Fuse Blocks		400	1000			2
LSCR2-K			800				

**LV Fuse gear**

**North American hi speed Fuse Links**

- Standard: UL/CSA
- Rated voltage: Up to 600Vac
- Rated current: 1 to 6000A
- Breaking capacity: 200kA
- Operating class: Fast acting
- Sizes: Refer to relevant data sheets, available upon request
- Applications: Suitable for medium power applications for UL markets



**Bussmann series high speed fuse links.**

Item no.	Description	Fix ctrs	Amps	Volts	I <sup>2</sup> T	Box qty	
<b>High speed fuse links - North American standard.</b>							
FWA -70B			70		4000		
FWA -80B			80		6000		
FWA -100B			100		12000		
FWA -125B			125		18000		
FWA -150B	A15QS L15S	52mm	150	150 Vac /Vdc	26000	1	
FWA -200B			200		45000		
FWA-225B			225		-		
FWA -250B			250		70000		
FWA -300B			300		100000		
FWA -350B			350		140000		
FWA -400B			400		180000		
FWA -450B			450		-		
FWA -500A	A15QS L15S	62mm	500	150 Vac /Vdc	120000	1	
FWA -600A			600		140000		
FWA -700A			700		220000		
FWA -800A			800		280000		
FWA -1000A			1000		510000		
FWA-1000AH			1000		460000		
FWA-1200AH	48 x 51		1200	150 Vac /Vdc	730000		
FWA-1500AH			1500		1400000		
FWA-2000AH			2000		2400000		
FWA-2500AH	48 X 75		2500		4100000		
FWA-3000AH			3000		5700000		
FWA-4000AH	48 x 89		4000		9200000		
FWX-35A	A30QS A25P(A)-4 L25S	61mm	35	250 Vac /Vdc	230	1	
FWX-40A			40		310		
FWX-45A			45		390		
FWX-50A			50		520		
FWX-60A			60		740		
FWX-70A			70		1400		
FWX-80A			80		1850		
FWX-90A			90		2450		
FWX-100A			58mm		100		3150
FWX-125A					125		4850
FWX-150A	150	6950					
FWX-175A			175		9300		
FWX-200A			200		12000		



FWA-400B



FWA-2000AH



FWX-600A



FWX-160AH

## LV Fuse gear

Bussmann series high speed fuse links.



FWX-160AH



FWH-150B

Item no.	Description	Fix ctrs	Amps	Volts	I <sup>2</sup> T	Box qty
<b>High speed fuse links - North American standard.</b>						
FWX-225A			225		14700	
FWX-250A			250		18100	
FWX-275A			275		21600	
FWX-300A			300		27300	
FWX-350A		66mm	350		48600	
FWX-400A			400	250	66100	
FWX-450A			450	Vac / Vdc	101000	
FWX-500A	A30QS		500		128000	
FWX-600A	A25P(A)-4		600		188000	1
FWX-700A	L25S	69mm	700		190000	
FWX-800A			800		230000	
FWX-1000AH			1000		360000	
FWX-1200AH		66 x 89	1200		750000	
FWX-1500AH			1500	250	880000	
FWX-1600AH			1600	Vac / Vdc	1200000	
FWX-2000AH		66 x 75	2000		2300000	
FWX-2500AH			2500		4700000	
FWH-35B		58mm	35		150	
FWH-40B		58mm	40		320	
FWH-45B		58mm	45		450	
FWH-50B		58mm	50		670	
FWH-60B		58mm	60		900	
FWH-70B	A50QS	73mm	70		900	
FWH-80B	A50P	73mm	80	500	1400	
FWH-90B	L50S	73mm	90	Vac / Vdc	1600	
FWH-100B		73mm	100		2000	
FWH-125B		73mm	125		3500	
FWH-150B		73mm	150		4600	
FWH-175B		73mm	175		6200	
FWH-200B		73mm	200		8500	
FWH-225A		77mm	225		23300	
FWH-250A		77mm	250		32200	
FWH-275A		77mm	275		40300	
FWH-300A		77mm	300		49800	
FWH-325A		77mm	325		63800	
FWH-350A		77mm	350		72900	
FWH-400A		77mm	400		96700	
FWH-450A	A50QS	81mm	450	500	127000	
FWH-500A	A50P	81mm	500	Vac / Vdc	149000	
FWH-600A	L50S	81mm	600		206000	
FWH-700A		108mm	700		298000	
FWH-800A		108mm	800		409000	
FWH-1000A		126mm	1000		450000	
FWH-1200A		126mm	1200		600000	
FWH-1400A		158 / 228 mm	1400		1000000	
FWH-1600A		158 / 228 mm	1600		1400000	

**LV Fuse gear**

Bussmann series high speed fuse links.

Item no.	Description	Fix ctrs	Amps	Volts	I <sup>2</sup> T	Box qty
<b>High speed fuse links - North American standard.</b>						
FWP-5B		64mm	5		10	
FWP-10B		64mm	10		20	
FWP-15B		64mm	15		75	
FWP-20B		64mm	20		180	
FWP-25B		64mm	25		340	
FWP-30B		64mm	30		450	
FWP-35B		89mm	35		160	
FWP-40B	A70QS	89mm	40	700	320	
FWP-50B	A70P	89mm	50	Vac / Vdc	600	
FWP-60B	L70S	89mm	60		950	
FWP-70B		98mm	70		2000	
FWP-80B		98mm	80		2400	
FWP-90B		98mm	90		2700	
FWP-100B		98mm	100		3500	
FWP-125A		98mm	125		7300	
FWP-150A		98mm	150		11700	
FWP-175A		98mm	175		16700	
FWP-200A		98mm	200		22000	
FWP-225A		98mm	225		31300	
FWP-250A		98mm	250		42500	
FWP-300A		98mm	300		71200	
FWP-350A		98mm	350		95600	
FWP-400A	A70QS	98mm	400	700	125000	
FWP-450A	A70P	127mm	450	Vac / Vdc	137000	
FWP-500A	L70S	127mm	500		170000	
FWP-600A		127mm	600		250000	
FWP-700A		133mm	700		300000	
FWP-800A		133mm	800		450000	
FWP-900A		140mm	900		530000	
FWP-1000A		140mm	1000		600000	
FWP-1200A		174 / 224mm	1200		1100000	
FWJ-35A		109mm	35		2000	
FWJ-40A		109mm	40		2500	
FWJ-50A		109mm	50		3500	
FWJ-60A		109mm	60		5000	
FWJ-70A		109mm	70		6900	
FWJ-80A		109mm	80		9700	
FWJ-90A		109mm	90		12000	
FWJ-100A		109mm	100		17500	
FWJ-125A		112mm	125		35000	
FWJ-150A		112mm	150		45000	
FWJ-175A		112mm	175		65000	
FWJ-200A		112mm	200		80000	
FWJ-250A	A100P	112mm	250	1000 Vac / 800Vdc	112000	
FWJ-300A		112mm	300		164000	
FWJ-350A		112mm	350		231000	
FWJ-400A		112mm	400		330000	
FWJ-500A		130mm	500		329000	
FWJ-600A		130mm	600		520000	
FWJ-800A		130mm	800		500000	
FWJ-1000A		135mm	1000		1100000	
FWJ-1200A		135mm	1200		2100000	
FWJ-1400A		135mm	1400		2700000	
FWJ-1600A		135mm	1600		4000000	
FWJ-1800A		135mm	1800		5300000	
FWJ-2000A		135mm	2000		7600000	



FWP-400A



FWJ-300A



## LV Fuse gear

### Square Body Fuse Links

A square bodied range of industrial fuse links for a wide variety of applications. NH fuse bases with thermoplastic bodies, DIN rail and/or screw mounting (size 4 screw mounting only). Range of accessories including phase barriers, IP20 finger-safe protection kits and neutral links available.



Standard: IEC 60269-4, DIN 43653 and 43620, UL Recognition and CSA Component acceptance  
 Rated voltage: 690 and 1250Vac, higher voltage ratings available  
 Rated current: 10 to 7500A  
 Breaking capacity: Up to 300kA  
 Operating class: aR  
 Sizes: 000, 00, 1 to 5  
 Applications: Used for the protection of DC common bus, DC drives, power converters/rectifiers and reduced voltage starters. Customs solutions also available

### Bussmann series high speed fuse links.

Item no.	Description	Size	Amps	Volts	I <sup>2</sup> T	Box qty
<b>High speed fuse links - DIN standard - blade - aR.</b>						
170M1558D			10		25.5	
170M1559D			16		48	
170M1560D			20		78	
170M1561D			25		130	
170M1562D			32		270	
170M1563D			40		460	
170M1564D	aR	000	50	690	770	10
170M1565D			63		1450	
170M1566D			80		2550	
170M1567D			100		4650	
170M1568D			125		8500	
170M1569D			160		16000	
170M1570D			200		28000	
170M1571D			250		51500	
170M1572D	aR	00	315	690	80500	10
170M3808D			40		285	
170M3809D			50		550	
170M3810D			63		850	
170M3811D			80		1350	
170M3812D			100		2600	
170M3813D			125		3900	
170M3814D			160		8250	
170M3815D			200		16500	
170M3816D	aR	1	250	690	31000	
170M3817D			315		52000	
170M3818D			350		73000	
170M3819D			400		115000	
170M4863D			450		155000	
170M4864D			500		190000	
170M4865D			550		240000	
170M4866D			630		345000	
170M4867D			700		495000	
170M5808D			400		79000	
170M5809D			450		115000	
170M5810D			500		155000	
170M5811D			550		215000	
170M5812D	aR	2	630	690	295000	
170M5813D			700		430000	
170M5814D			800		610000	
170M5815D			900		895000	
170M5816D			1000		1300000	
170M5817D			1100		1750000	

170M1558D

170M3808D

170M5808D

**LV Fuse gear**

Bussmann series high speed fuse links.

Item no.	Description	Size	Amps	Volts	I <sup>2</sup> T	Box qty
170M6808D			500		99500	
170M6809D			550		140000	
170M6810D			630		220000	
170M6811D			700		320000	
170M6812D			800		490000	
170M6813D	aR	3	900	690	720000	
170M6814D			1000		985000	
170M6892D			1100		1400000	
170M8554D			1250		2150000	
170M8555D			1400		2700000	
170M8556D			1500		3350000	
170M8557D			1600		4150000	
<b>High speed fuse links - DIN standard - blade - gR.</b>						
170M2691			10		20	
170M2692			16		38	
170M2693			20		70	
170M2694			25		125	
170M2695			32		275	
170M2696	gR	00	40	690	490	
170M2697			50		1000	
170M2698			63		1800	
170M2699			80		3600	
170M2700			100		6650	
170M2701			125		12000	
170M2702			160		22500	
170M4176			50		705	
170M4177			63		1300	
170M4178			80		2600	
170M4179			100		4850	
170M4180			125		9500	
170M4181	gR	1	160	690	18000	
170M4182			200		34500	
170M4183			250		70500	
170M4184			315		135000	
170M4185			350		175000	
170M4186			400		250000	
170M5881			200		29000	
170M5882			250		52500	
170M5883			315		105000	
170M5884			350		135000	
170M5885	gR	2	400	690	205000	
170M5886			450		290000	
170M5887			500		375000	
170M5888			550		515000	
170M5889			630		770000	
170M6080			350		120000	
170M6081			400		175000	
170M6082			450		250000	
170M6083	gR	3	500	690	330000	
170M6084			550		435000	
170M6085			630		645000	
170M6086			700		840000	
170M6087			800		1300000	



170M6808D



170M2691



170M4176



170M5881



170M6080

## LV Fuse gear

Bussmann series high speed fuse links.

Item no.	Description	Size	Amps	Volts	I <sup>2</sup> T	Box qty
<b>High speed fuses - DIN standard - 80mm fixing.</b>						
170M1408			10		25.5	
170M1409			16		48	
170M1410			20		78	
170M1411			25		130	
170M1412			32		270	
170M1413			40		460	
170M1414			50		770	
170M1415	aR	000	63	690	1450	
170M1416			80		2550	
170M1417			100		4650	
170M1418			125		8500	
170M1419			160		16000	
170M1420			200		28000	
170M1421			250		51500	
170M1422			315		80500	
170M2670	aR	00	350	690	91500	
170M2671			400		125000	
170M3108			40		270	
170M3109			50		515	
170M3110			63		770	
170M3111			80		1250	
170M3112			100		2450	
170M3113			125		3700	
170M3114			160		7500	
170M3115	aR	1*	200	690	15000	
170M3116			250		28500	
170M3117			315		46500	
170M3118			350		68500	
170M3119			400		105000	
170M3120			450		140000	
170M3121			500		180000	
170M3122			550		230000	
170M3123			630		325000	
170M4108			200		11500	
170M4109			250		21000	
170M4110			315		42000	
170M4111			350		59000	
170M4112			400		91500	
170M4113	aR	1	450	690	120000	
170M4114			500		170000	
170M4115			550		230000	
170M4116			630		350000	
170M4117			700		465000	
170M4118			800		725000	
170M4119	aR	1	900	550	850000	
170M5108			400		74000	
170M5109			450		105000	
170M5110			500		145000	
170M5111			550		190000	
170M5112			630		275000	
170M5113	aR	2	700	690	405000	
170M5114			800		575000	
170M5115			900		840000	
170M5116			1000		1250000	
170M5117			1100		1600000	
170M5118			1250		2400000	



170M1480



170M4116



170M5108

**LV Fuse gear**

Bussmann series high speed fuse links.

Item no.	Description	Size	Amps	Volts	I <sup>2</sup> T	Box qty
<b>High speed fuses - DIN standard - 80mm fixing.</b>						
170M6108			500		95000	
170M6109			550		135000	
170M6110			630		210000	
170M6111			700		300000	
170M6112			800		465000	
170M6113	aR	3	900	690	670000	
170M6114			1000		945000	
170M6115			1100		1300000	
170M6116			1250		1950000	
170M6117			1400		2450000	
170M6118			1500		3100000	
170M6119			1600		3900000	
170M6120	aR	3	1800	600	5250000	
170M6121	aR	3	2000	550	6350000	
<b>High speed fuses - DIN standard - 110mm fixing.</b>						
170M3258			40		270	
170M3259			50		515	
170M3260			63		770	
170M3261			80		1250	
170M3262			100		2450	
170M3263			125		3700	
170M3264			160		7500	
170M3265	aR	1*	200	690	15000	
170M3267			250		28500	
170M3268			315		46500	
170M3269			350		68500	
170M3270			400		105000	
170M3271			450		140000	
170M3272			500		180000	
170M3273			550		230000	
170M3274			630		325000	
170M4258			200		11500	
170M4259			250		21000	
170M4260			315		42000	
170M4261			350		59000	
170M4262			400		91500	
170M4263	aR	1	450	690	120000	
170M4264			500		170000	
170M4265			550		230000	
170M4266			630		350000	
170M4267			700		465000	
170M4268			800		725000	
170M4269	aR	1	900	550	850000	
170M5258			400		74000	
170M5259			450		105000	
170M5260			500		145000	
170M5261			550		190000	
170M5262			630		275000	
170M5263	aR	2	700	690	405000	
170M5264			800		575000	
170M5265			900		840000	
170M5266			1000		1250000	
170M5267			1100		1600000	
170M5268			1250		2400000	



170M6109



170M3258



170M4258

## LV Fuse gear

Bussmann series high speed fuse links.

Item no.	Description	Size	Amps	Volts	I <sup>2</sup> T	Box qty
<b>High speed fuses - DIN standard - 110mm fixing.</b>						
170M6258			500		95000	
170M6259			550		135000	
170M6260			630		210000	
170M6261			700		300000	
170M6262			800		465000	
170M6263	aR	3	900	690	670000	
170M6264			1000		945000	
170M6265			1100		1300000	
170M6266			1250		1950000	
170M6267			1400		2450000	
170M6268			1500		3100000	
170M6269			1600		3900000	
170M6270	aR	3	1800	600	5250000	
170M6271	aR	3	2000	550	6350000	
<b>High speed fuse links - DIN standard - flush end contact.</b>						
170M2758			25		130	
170M2759			32		270	
170M2760			40		460	
170M2761			50		770	
170M2762			63		1450	
170M2763			80		2550	
170M2764	aR	00	100	690	4650	
170M2765			125		8500	
170M2766			160		16000	
170M2767			200		28000	
170M2768			250		51500	
170M2769			315		80500	
170M2770			350		91500	
170M2771			400		125000	
<b>High speed fuse links - DIN standard - flush end contact.</b>						
170M3458			40		270	
170M3459			50		515	
170M3460			63		770	
170M3461			80		1250	
170M3462			100		2450	
170M3463	aR	1*	125	690	3700	
170M3464			160		7500	
170M3465			200		15000	
170M3466			250		28500	
170M3467			315		46500	
170M3468			350		68500	
170M3469			400		105000	
170M3470			450		140000	
170M3471			500		180000	
170M3472			550		230000	
170M3473			630		325000	
170M4458			200		11500	
170M4459			250		21000	
170M4460			315		42000	
170M4461	aR	1	350	690	59000	
170M4462			400		91500	
170M4463			450		120000	
170M4464			500		170000	
170M4465			550		230000	
170M4466			630		350000	
170M4467			700		465000	
170M4468			800		725000	



170M6258



170M2758



170M2758



170M3462

**LV Fuse gear**

Bussmann series high speed fuse links.

Item no.	Description	Size	Amps	Volts	I <sup>2</sup> T	Box qty
<b>High speed fuse links - DIN standard - flush end contact.</b>						
170M4469	aR	1	900	550	850000	
170M5458			400		74000	
170M5459			450		105000	
170M5460			500		145000	
170M5461			550		190000	
170M5462	aR	2	630	690	275000	
170M5463			700		405000	
170M5464			800		575000	
170M5465			900		840000	
170M5466			1000		1250000	
170M5467	aR	2	1100	600	1600000	
170M5468			1250		2400000	
170M6458			500		95000	
170M6459			550		135000	
170M6460			630		210000	
170M6461			700		300000	
170M6462			800		465000	
170M6463	aR	3	900	690	670000	
170M6464			1000		945000	
170M6465			1100		1300000	
170M6466			1250		1950000	
170M6467			1400		2450000	
170M6468			1500		3100000	
170M6469			1600		3900000	
170M6470	aR	3	1800	600	5250000	
170M6471	aR	3	2000	550	6350000	
<b>Fuse holders to suit High speed fuse links</b>						
170H3003	To suit 80mm		630	1000		
170H3004			1250	1000		
170H3005	To suit 110mm		630	1400		
170H3006			1250	1400		1
170H0235				To suit Type 'T' Indicator		
170H0236	Micro switch			To suit Type 'K' Indicator		
170H0069				To suit Type 'K' Indicator		



170M5458



170M6462



170H3004

## LV Fuse gear

### Bussmann series Glass tube fuse links

Item no.	Amp rating	Volts	Type	MOQ	
<b>M205 fuse links - 5 X 20mm.</b>					
<b>S500-(A)-R</b>	32 to 10A	250	Glass	Fast	10
<b>S506-(A)-R</b>				T/Delay	
<b>S501-(A)-R</b>	32 to 10A	250	Ceramic	Fast	10
<b>S505-(A)-R</b>				T/Delay	
<b>3AG fuse links - 6.3 X 32mm.</b>					
Fast-acting, glass tube					
Optional axial leads available					
1/4 x 1-1/4 (6.3mm x 32mm) physical size					
Glass tube, nickel-plated brass endcap construction					
UL Listed product meets standard 248-14					
<b>AGC-(A)</b>	1/4 to 10A	250	Glass	Fast	5
	15 to 50A	32			
<b>3AG fuse links - 6.3 X 32mm.</b>					
<b>Time-delay</b>					
Optional axial leads available					
1/4 x 1 1/4 (6.4 x 31.7mm) physical size					
Glass tube, nickel-plated brass endcap construction					
UL Listed product meets standard 248-14					
<b>MDL-(A)</b>	1/4 to 8A	250	Glass	T/Delay	5
	15, 20, 25, 30, 35, 40, 50	32			
<b>3AG fuse links - 6.3 X 32mm.</b>					
<b>ABC-(A)</b>	1/4 to 30A	250	Ceramic	Fast	5
<b>MDA-(A)</b>	1/4 to 30A			T/Delay	
<b>1AG fuse links - 6.3 X 16mm.</b>					
Fast acting					
1/4" x 5/8" (6.3mm x 15.9mm) physical size					
Glass tube, nickel-plated brass endcap construction					
Optional leaded version available					
UL Listed product meets standard 248-14					
<b>AGA-(A)</b>	630mA to 5A	250	Glass	Fast	5
	6 to 30A	32			
<b>7AG fuse links - 6.3 X 22mm.</b>					
Fast-acting					
1/4" x 7/8" (6.3 x 22.2mm) physical size					
Glass tube, nickel-plated brass endcap construction					
Mounts in inline holders HHB, HHH, HRK or 1/4" clips					
<b>AGW-(A)</b>	1 to 30A	32	Glass	Fast	5
<b>8AG fuse links - 6.3 X 25mm.</b>					
<b>AGX-(A)</b>	1/1 to 2A	250	Glass	Fast	5
	2.5 to 7A	125			
	8 to 30A	32			
<b>5AG fuse links - 10.3 X 38mm.</b>					
<b>AGU-(A)</b>	1 to 3A	250	Glass	Fast	5
	4 to 30A	32			
<b>Fuse holders.</b>					
<b>HTC-55M</b>	6.3	250	Panel mount	M205	1
<b>HKP</b>	30	250		3AG	



AGC



AGW



AGU



HKP

## LV Fuse gear

### Bussmann series Surge protection

Eaton's Bussmann™ series one-pole IEC Class II modular surge arresters for TN and TT systems feature local easyID™ visual status indication and optional remote contact signalling. The unique module locking system fixes the protection module to the base.

System volts: 275, 320, 385, 440, 600

The unique nature of Photovoltaic (PV) installations make them vulnerable to damage from lightning strikes and overvoltage events. Bussmann® series DIN-Rail PV Surge Protection Devices (SPDs) combine surge and lightning protection for complete PV protection from overvoltage events.

PV SPD with integrated overcurrent protection ensures complete device isolation for enhanced system safety

Item no.	Description	Applic	Volts	Poles	Box qty
<b>Surge protection.</b>					
<b>BSPM1275TN</b>	Without remote signalling	Indust Class II	275Vac	1	1
<b>BSPM1275TNR</b>	With remote signalling				
<b>BSPM1375TN</b>	Without remote signalling		275Vac	3	1
<b>BSPM1375TNR</b>	With remote signalling				
<b>BPM275IEC</b>	Replacement module		275Vac	1	1
<hr/>					
<b>BSPS3255TNC</b>	Without remote signalling	Indust Class 1	275Vac	3	1
<b>BSPS3255TNCR</b>	With remote signalling				
<b>BPS255IEC</b>	Replacement module				
<hr/>					
<b>BSPH31000YPV</b>	Without remote signalling	Solar	1000Vdc	1	1
<b>BSPH31000YPVR</b>	With remote signalling				
<b>BSPS31000YPV</b>	Without remote signalling				
<b>BPH500YPV</b>	Replacement module (outer)				
<b>BPM500YPV</b>	Replacement module (inner)				



BSPM1275TN

### Bussmann series fuse kits

Item no.	Description
<b>NO-140</b>	3AG fuses, glass, fast & time delay, 140pcs
<b>NO-220</b>	M205 fuses, glass, fast & time delay, 220pcs
<b>NO-270</b>	3AG & M205 fuses, glass, fast & time delay, 270pcs
<b>GSK-260</b>	3AG & M205 fuses, glass & ceramic, fast & time delay, 260pcs

### Bussmann series automotive

Item no.	Amp rating	Volts	Type	MOQ
<b>Automotive Blade Fuses</b>				
The ATL, ATR, ATM, ATC and MAX blade fuses are commonly used in most domestic and imported cars today. All Bussmann blade fuses meet or exceed OEM and SAE standards				
<b>ATM-(A)</b>	2, 3, 4, 5, 7.5, 10, 15, 20, 25, 30	32	Fast Mini	5
<b>ATM-(A)LP</b>	5, 7.5, 10, 15, 20, 25, 30	32	Fast Lo Profile	5
<b>ATC-(A)</b>	1, 2, 3, 4, 5, 7.5, 10, 15, 20, 25, 30, 40	32	Fast Std	5
<b>MAX-(A)</b>	20, 30, 40, 50, 60, 70, 80	32	Fast Large	1
<hr/>				
<b>AMI-(A)</b>	100-300A	32		
<b>AMG-(A)</b>	50-100A			
<b>HMID</b>	Fuseholder to suit AMI		1	
<b>HMEG</b>	Fuseholder to suit AMG		1	
<hr/>				
<b>Automotive Low-Voltage Limiter</b>				
<b>ANL (A)</b>	35, 40, 50, 60, 100, 130, 150	32	Non Delay	1
	175, 200, 225, 250, 275			
	300, 325, 350, 400, 500			
<b>ANN (A)</b>	10, 35, 40, 50, 60, 100, 130, 150, 175, 200, 225, 250, 275, 300	32	Very Fast	1
	325, 350, 400, 500, 600, 675, 700, 800			
<b>4164</b>	Fuse Base to Suit ANL & ANN			1



ATM-(A)



MAX-(A)



ANL (A)



## LV Fuse gear

### Bussmann series solar products.

#### Bussmann series solar products.

Eaton's Bussmann series range of 14 x 51 mm package fuse links is specifically designed for protecting an isolating photovoltaic strings. These fuse links are capable of interrupting low overcurrents associated with faulted PV systems (reverse current, multi array fault).

Rated voltage: 1000 V d.c. (25 and 32 A)  
1100 V d.c. (15 and 20 A)

Rated current: 15 to 32 A

Breaking capacity: 10 kA

Operating class: gPV and UL PV fuse links



CHPV2U



PV-1A10F



SD2-D-PV

Item no.	Description	Body dim	Amps	Volts	Box qty
<b>Photovoltaic fuse links - ferrule fuse holders.</b>					
CHPV1U		10 X 38mm	30	1000 Vdc	12
CHPV2U					6
CHPV1IU	With indicator	10 X 38mm	30	1000	12
CHPV2IU					6
CH141D-PV		10 X 38mm	30	1000 Vdc	6

<b>Photovoltaic fuse links</b>					
PV-1A10F			1		
PV-2A10F			2		
PV-3A10F			3		
PV-4A10F			4		
PV-5A10F			5		
PV-6A10F	Solar fuse - ferrule	10 X 38mm	6		
PV-8A10F			8		
PV-10A10F			10	1000 Vdc	10
PV-12A10F			12		
PV-15A10F			15		
PV-20A10F			20		
PV-15A14F			15		
PV-20A14F	Solar fuse - ferrule	14 X 51mm	20		
PV-25A14F			25		
PV-32A14F			32		
PV-15A14LF			15		
PV-20A14LF	Solar fuse - ferrule	14 X 65mm	20	1300 Vdc	10
PV-25A14LF			25		
PV-32A14LF			32		

Item no.	Description	Amps	Volts	Poles	Box qty
<b>Photovoltaic fuse links - blade fuse holders.</b>					
SD1-D-PV	For PV-NH1	250			1
SD2-D-PV	For PV-NH2	400			1
SD3-D-PV	For PV-NH3	630	1500 Vdc	1	1
SD1XL-S	For 01 & 1XL	250			1
SD2XL-S	For 2XL	400			1
SD3L-S	For 3L	630			1

## LV Fuse gear

### Bussmann series solar products.

#### Bussmann series solar products.

Eaton's Bussmann series NH size and XL package photovoltaic fuse links are specifically designed to protect and isolate photovoltaic array combiners and disconnects. These fuse links are capable of interrupting low overcurrents associated with faulted PV systems (reverse current, multi-array fault).

Rated voltage: NH - 1000 V d.c.  
 XL - 1000, 1100, 1200, 1500 V d.c.

Rated current: NH - 32 to 400 A  
 XL - 50 to 600 A

Breaking capacity: NH - 50 kA  
 XL - 1000 V d.c. (Size 01 and 3: 50kA, Size 1 and 2: 33kA)  
 1500 V d.c. : 30kA

Operating class: gPV and UL PV fuse links

Item no.	Description	Amps	Volts	Body size	Box qty
<b>Photovoltaic fuse links.</b>					
PV-32ANH1		32			
PV-40ANH1		40			
PV-50ANH1		50			
PV-63ANH1	Solar fuse - blade	63	1000 Vdc	1	1
PV-80ANH1		80			
PV-100ANH1		100			
PV-125ANH1		125			
PV-160ANH1		160			
PV-63A-01XL		50			
PV-80A-01XL		63			
PV-100A-01XL	Solar fuse - blade	80	1000 Vdc	01	1
PV-125A-01XL		100			
PV-160A-01XL		125			
PV-200A-1XL		200			
PV-160A-2XL		160			
PV-200A-2XL		200			
PV-250A-2XL	Solar fuse - blade	250	1000 Vdc	2	1
PV-315A-2XL		315			
PV-355A-2XL		355			
PV-350A-3L		350			
PV-400A-3L	Solar fuse - blade	400	1000 Vdc	3	1
PV-500A-3L		500			
PV-600A-3L		600			
PV-63A-01XL-D		63			
PV-80A-01XL-D		80			
PV-100A-01XL-D	Solar fuse - bolted	100	1000 Vdc	01	
PV-125A-01XL-D		125			
PV-160A-01XL-D		160			
PV-200A-1XL-D		100			
PV-160A-2XL-D		160			
PV-200A-2XL-D		200			
PV-250A-2XL-D	Solar fuse - bolted	250	1000 Vdc	2	
PV-315A-2XL-D		350			
PV-355A-2XL-D		400			
PV-350A-3L-D		350			
PV-400A-3L-D	Solar fuse - bolted	400	1000 Vdc		
PV-500A-3L-D		500			
PV-600A-3L-D		600			



PV-200ANH1



PV-250ANH2



PV-250ANH2-B



PV-250A2XL-D

## MV Fuse gear

Bussmann series medium voltage fuse links.

### Air Fuse Links

Standard: BS 2692-1  
 Rated voltage: 3.6 to 72.5kV  
 Rated current: 3.15 to 160A  
 Breaking capacity: Up to 40kA  
 Operating class: Back-up  
 Applications: Suitable for primary side transformer protection, fuse switch combination, unit fuse bases and fuse switches



24ADIHA25

Item no.	Amps	Volts	Lth	Dis	MOQ	
<b>Medium voltage fuse links for use in air.</b>						
12BDGHA6.3	6.3					
12BDGHA10	10					
12BDGHA16	16					
12BDGHA20	20	12kV	359	51	3	
12BDGHA25	25					
12BDGHA31.5	31.5					
12BDGHA40	40					
12BDGHA50	50					
12BFGHA63	63	12kV	359	76	3	
12BFGHA71	71					
12BFGHA80	80					
12BFGHA90	90					
12BFGHA100	100					
12AKGHA125	125					
24ADIHA3.15	3.15	24kV	565	51	3	
24ADIHA6.3	6.3					
24ADIHA10	10					
24ADIHA16	16					
24ADIHA20	20					
24ADIHA25	25	24kV	565	76	3	
24ADIHA31.5	31.5					
24AFIHA40	40					
24AFIHA50	50					
24AFIHA63	63					
24AFIHA80	80					
24AFIHA90	90					
<b>Medium voltage fuse links - VT for use in air.</b>						
3.6ABWNA3.15	AIR3.3/3	3.15	3.6kV	142	25.4	1
3.6ABWNA6.3		6.3				
3.6ABCNA3.15		3.15	3.6kV	195	25.4	1
3.6ABCNA6.3		6.3				
3.6ABCNA10		10				
7.2VDNN1		1				1
7.2ABWNA3.15	VTF6.6/3	3.15	7.2Kv	142	25.4	1
7.2ABWNA6.3		6.3				
7.2VDNN0.62		0.62				
7.2ABCNA3.15		3.15			25.4	1
7.2ABCNA6.3		6.3				
12VDNN0.5	VTF11/0.5	0.5				
12VDNN1	VTF11/1	1	12kV	195	25.4	1
12ABCNA3.15	VTF11/3	3.15				
24ABGNA3.15		3.15	24kV	359	25.4	1



3.6ABWNA6.3

## MV Fuse gear

### Bussmann series medium voltage fuse links.

#### Oil Fuse Links

Standard: IEC 60282-1, BS 2692-1 and ESI Standard 12-8  
 Rated voltage: 3.6 to 24kV  
 Rated current: 6.3 to 250A  
 Breaking capacity: Up to 50kA  
 Operating class: Back-up  
 Applications: Primary side transformer protection and oil filled switch combination unit  
 Other: Fitted with a pyrotechnic striker for open fuse indication



Item no.	Amps	Volts	Lth	Dis	MOQ
<b>Medium voltage fuse links for use in oil.</b>					
12OEFMA6.3	KEBXO5	6.3			
12OEFMA10	KEBXO10	10			
12OEFMA16	KEBXO16	16			
12OEFMA20	KEBXO20	20			
12OEFMA25	KEBXO25	25			
12OEFMA31.5		31.5			
12OEFMA40	KEBXO40	40	12kV	254	63.5
12OEFMA50	KEBXO50	50			3
12OEFMA63	KEBXO63	63			
12OHFMA71		71			
12OHFMA80	KEBXO80	80			
12OHFMA90		90			
12OHFMA100		100			
12OHGMA6.3	KEMXO5	6.3			
12OHGMA10	KEMXO10	10			
12OHGMA16	KEMXO16	16			
12OHGMA20	KEMXO20	20			
12OHGMA25	KEMXO25	25			
12OHGMA31.5		31.5			
12OHGMA40	KEMXO40	40	12kV	359	63.5
12OHGMA50	KEMXO50	50			3
12OHGMA63	KEMXO63	63			
12OHGMA71		71			
12OHGMA80	KEMXO80	80			
12OHGMA90	KEMXO90	90			
12OHGMA100	KEMXO100	100			
12OLGMA125	KEMXO120	125			



12OEFMA820

<b>Medium voltage fuse links - VT for use in oil.</b>					
	OIR6.6/0.62	0.62	7.2kV	142	22
7.2OBWNA3.15		3.15	7.2kV	142	25.4
7.2OBWNA6.3		6.3			1
7.2OBCNA3.15	OIR6.6/3	3.15	7.2kV	195	25.4
7.2OBCNA6.3		6.3			1
	OIR11/0.62	0.62	7.2kV		25.4
12OBCNA3.15		3.15	12kV	195	25.4
24OBGNA3.15		3.15	24kV		25.4
36OBGNA3.15		3.15	36kV	359	25.4



7.2OBCNA3.15

## MV Fuse gear

### Bussmann series medium voltage fuse links.

#### DIN Fuse Links

Standard: DIN 43625, IEC 60282-1 and VDE 0670-4

Rated voltage: 3.6 to 36kV

Rated current: 6.3 to 400A

Breaking capacity: 20 to 63kA

Operating class: Back-up

Applications: Suitable for primary side transformer protection, fuse switch combination, unit fuse bases and fuse switches



12TDLEJ25



24TDMEJ20



3.6WDLSJ50

Item no.	Amps	Volts	Lth	Dis	MOQ
<b>Medium voltage fuse links - DIN standard.</b>					
12TDLEJ6.3	6.3				
12TDLEJ10	10				
12TDLEJ16	16				
12TDLEJ20	20				
12TDLEJ25	25	12kV	292	51	3
12TDLEJ31.5	31.5				
12TDLEJ40	40				
12TDLEJ50	50				
12TDLEJ63	63				
12THLEJ80	80	12kV	292	67	3
12THLEJ100	100				
12TKLEJ125	125	12kV	292	76	3
12TXLEJ160	160				
12TXLEJ200	200	12kV	292	88	3
24TDMEJ6.3	6.3				
24TDMEJ10	10				
24TDMEJ16	16				
24TDMEJ20	20	24kV	442	51	3
24TDMEJ25	25				
24TDMEJ31.5	31.5				
24TDMEJ40	40				
24TDMEJ50	50				
24THMEJ63	63	24kV	442	67	3
24THMEJ80	80				
24THMEJ100	100				
24TXMEJ125	125	24kV	442	88	3
24TXMEJ160	160				
<b>Medium voltage fuse links - DIN motor start.</b>					
3.6WDLSJ50	50				
3.6WDLSJ63	63				
3.6WDLSJ80	80				
3.6WDLSJ100	100	3.6kV	292	51	3
3.6WDLSJ125	125				
3.6WFLSJ160	160				
3.6WFLSJ200	200				
3.6WKLSJ250	250				
3.6WKLSJ315	315	3.6kV	292	76	3
3.6WKLSJ400	400				
7.2WFMSJ25	25				
7.2WFMSJ31.5	31.5				
7.2WFMSJ40	40				
7.2WFMSJ50	50				
7.2WFMSJ63	63				
7.2WFMSJ80	80				
7.2WFMSJ100	100	7.2kV	442	76	3
7.2WFMSJ125	125				
7.2WFMSJ160	160				
7.2WKMSJ200	200				
7.2WKMSJ224	224				
7.2WKMSJ250	250				
7.2WKMSJ315	315				

**MV Fuse gear**

**Bussmann series medium voltage fuse links.**

**Motor Start Fuse Links**

Standard: IEC 60282-1, DIN 43625 and BS 2692  
 Rated voltage: 2.75 to 7.2kV  
 Rated current: 6.3 to 400A  
 Breaking capacity: Up to 63kA  
 Operating class: Back-up  
 Applications: Provide short-circuit protection in motor circuits to both the motor starter & cables  
 Other: Fitted with a pyrotechnic striker for open fuse indication



Item no.	Amps	Volts	Lth	Dis	MOQ
<b>Medium voltage fuse links - BS motor start.</b>					
3.6WDFHO50	50				
3.6WDFHO63	63				
3.6WDFHO80	80	3.6kV	254a	51	3
3.6WDFHO100	K81PEX100				
3.6WDFHO125	K81PEX125				
3.6WFFHO160	K81PEX160				
3.6WFFHO200	K81PEX200				
3.6WKFHO250	K81PEX250				
3.6WKFHO315	K81PEX315	3.6kV	254a	76	3
3.6WKFHO355	K81PEX350				
3.6WKFHO400					
	K81PRX450				
3.6WDFHO50	50				
3.6WDFHO63	63				
3.6WDFHO80	80	3.6kV	254a	51	3
3.6WDFHO100	K81PEX100				
3.6WDFHO125	K81PEX125				
3.6WFFHO160	K81PEX160				
3.6WFFHO200	K81PEX200				
3.6WKFHO250	K81PEX250				
3.6WKFHO315	K81PEX315	3.6kV	254a	76	3
3.6WKFHO355	K81PEX350				
3.6WKFHO400					
	K81PRX450				
7.2WFNHO25	25				
7.2WFNHO31.5	31.5				
7.2WFNHO40	40				
7.2WFNHO50	K81SDX50				
7.2WFNHO63	K81SDX63				
7.2WFNHO80	K81SDX80				
7.2WFNHO100	K81SDX100	7.2kV	403	76	3
7.2WFNHO125	K81SDX125				
7.2WFNHO160	K81SDX160				
7.2WKNHO200	K81SDX200				
7.2WKNHO224	K81SDX225				
7.2WKNHO250	K81SDX250				
7.2WKNHO315	K81SDX315				



Item no.	Description	MOQ
<b>Medium voltage fuse links - mounting clips.</b>		
1A1873	To Suit 20mm	
A3354705	To Suit 25.4mm	
A3354710	To Suit 51.0mm	
A3354720	To Suit 63.5mm	2
A3354730	To Suit 76.0mm	
A3354745	To Suit 45mm DIN	
270303	To Suit 45mm DIN	

